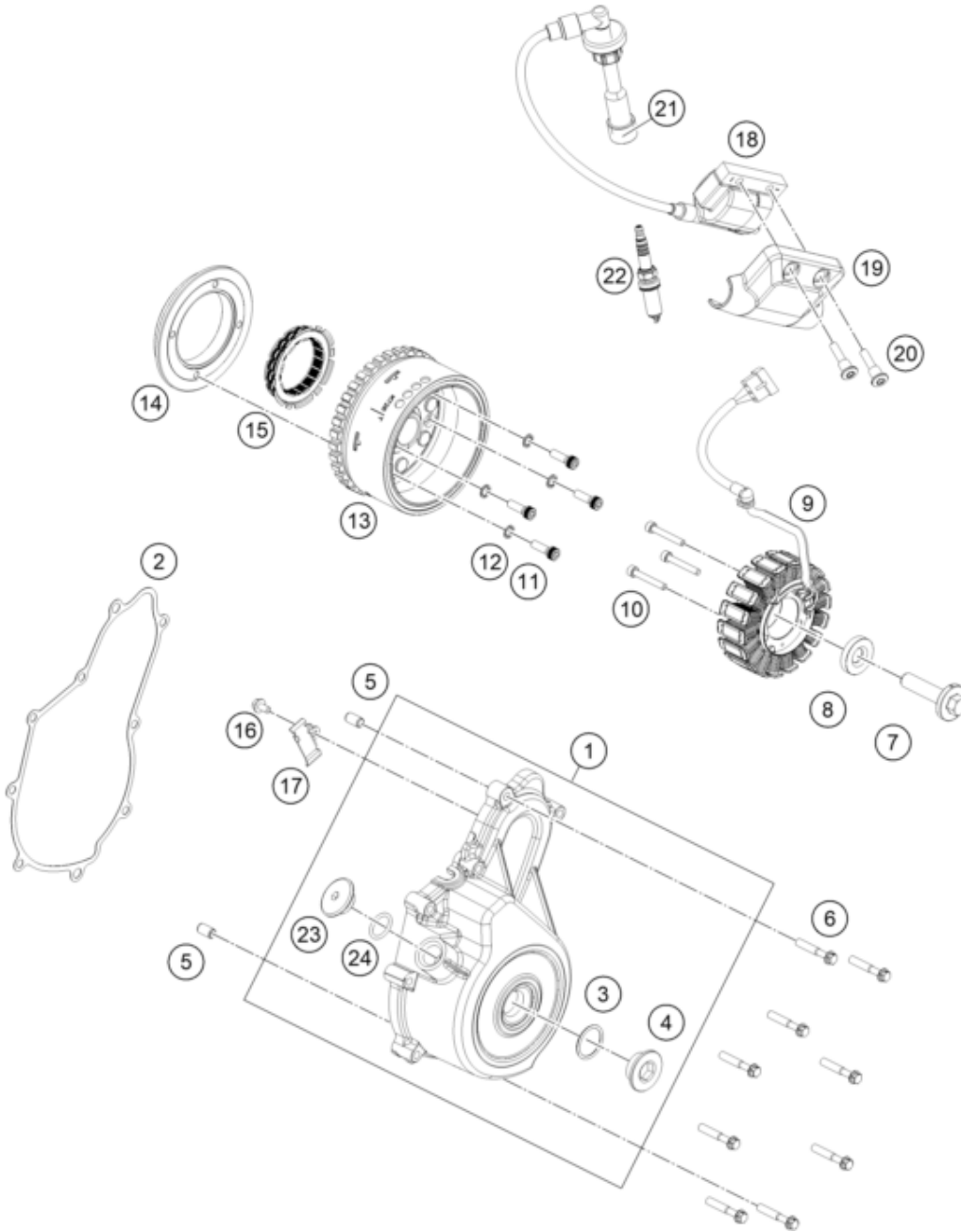


| | | |
|--|-----------------|--|
| <p>ACHTUNG !!! V2: Drehmomentbegrenzer mit Nadellager Motor Seriennummer von R96304000</p> <p>Betroffene Baugruppen: 30 - Motorgehäuse 39 - Zündanlage 40 - Elektrostarter</p> | <p>!</p> | <p>CAUTION !!! V2: Torque limiter with needle bearing Engine serial number from R96304000</p> <p>Affected assembly groups: 30 - Engine Case 39 - Ignition System 40 - Electric Starter</p> |
|--|-----------------|--|



| Pos | Part Number | Description | Additional Text | Quantity |
|-----|---------------|--------------------------------|-----------------|----------|
| 1 | 96330002133C1 | COVER MAGNETO ASSLY JP541267 K | | 1.00 |
| 2 | 96330040000 | GASKET COVER MAGNETO | | 1.00 |
| 3 | J770024015 | O-RING 24X2,5 | | 1.00 |
| 4 | 90230094000 | PLUG SCREW M24X1,5 | | 1.00 |
| 5 | 90130024000 | PIN DOWEL 8X6,4X14MM | 14mm length | 2.00 |
| 6 | J025060350 | FLANGED BOLT M6X35 WS8 | | 9.00 |
| 7 | J900001205000 | BOLT ASSEMBLY | | 1.00 |
| 8 | J690001260000 | WASHER PLAIN-ID 12.3XOD 31XT 6 | | 1.00 |
| 9 | 96339004000 | STATOR ASSEMBLY | | 1.00 |

| | | | |
|----|---------------|--------------------------------|------|
| 10 | J912050353S | AH SCREW M5X35 SELF LOCKING | 3.00 |
| 11 | 90130001001 | SOCKET HEAD SCREW M6X20 | 4.00 |
| 12 | J797060003 | TOOTHED WASHER M6 | 4.00 |
| 13 | 96339005000 | ROTOR ASSEMBLY | 1.00 |
| 14 | 90130001000 | SUPPORT FREEWHEEL CLUTCH | 1.00 |
| 15 | 90140026000 | FREEWHEEL CLUTCH | 1.00 |
| 16 | J900000501003 | BOLT FLANGED M5X0.8 | 1.00 |
| 17 | 96339029000 | BRACKET MAGNETO | 1.00 |
| 18 | 96339006000 | coil assembly ignition | 1.00 |
| 19 | 96339006050 | COVER COIL IGNITION | 1.00 |
| 20 | J900000603400 | SCREW SOCKET STEP M6X1 | 2.00 |
| 21 | 90239090001 | RUBBER GASKET SPARK PLUG | 1.00 |
| 22 | 93839093000 | Spark plug BOSCH VR6NEU M12X1. | 1.00 |
| 23 | 93839010100 | Screw plug, OT marking | 1.00 |
| 24 | J770015824 | O-RING 15,8X2,4 | 1.00 |