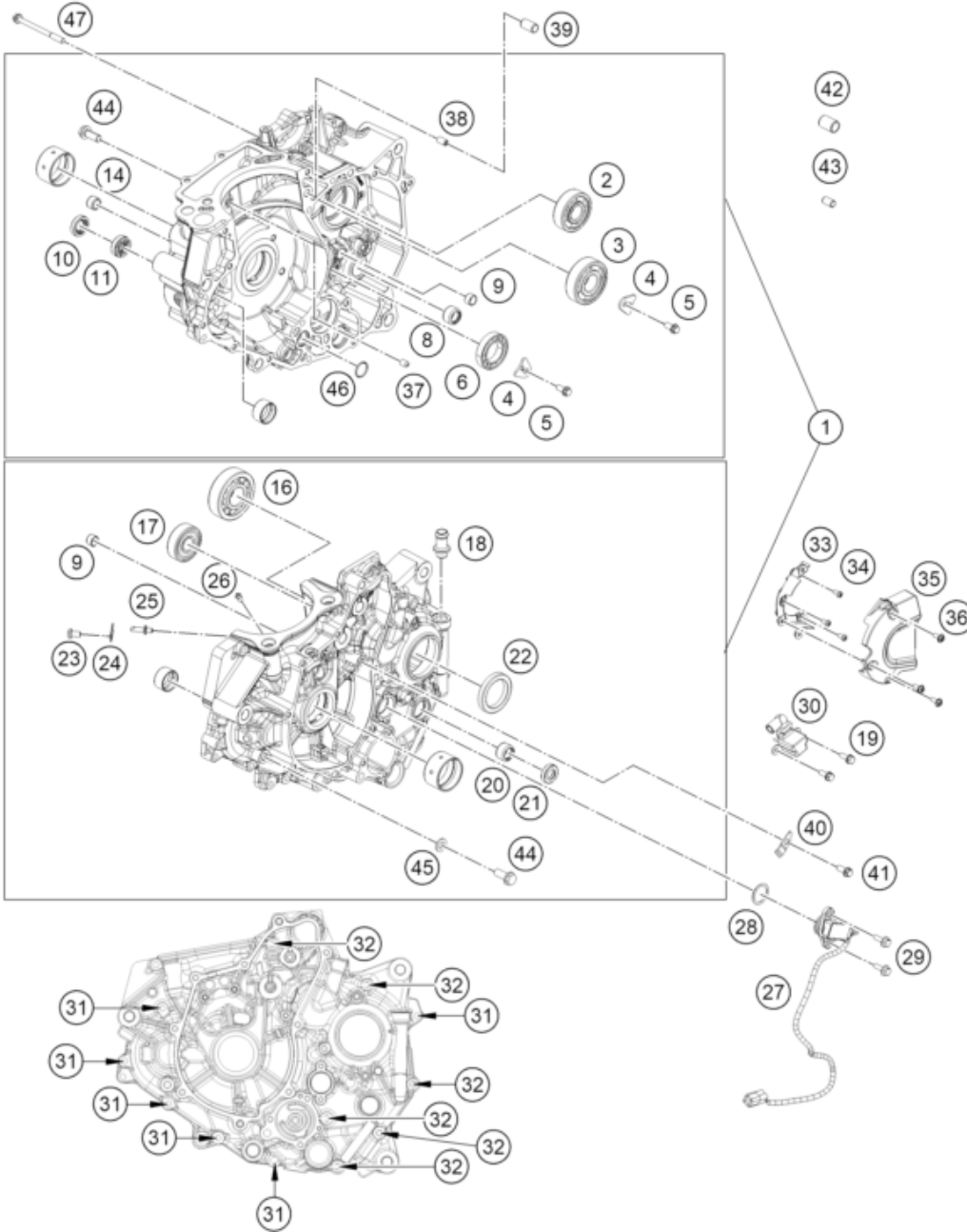


| | |
|--|---|
| <p>ACHTUNG !!! V2: Drehmomentbegrenzer mit Nadellager Motor Seriennummer von R96304000</p> <p>! </p> <p>Betroffene Baugruppen: 30 - Motorgehäuse 39 - Zündanlage 40 - Elektrostarter</p> | <p>CAUTION !!! V2: Torque limiter with needle bearing Engine serial number from R96304000</p> <p>Affected assembly groups: 30 - Engine Case 39 - Ignition System 40 - Electric Starter</p> |
|--|---|



| Pos | Part Number | Description | Additional Text | Quantity |
|-----|---------------|--------------------------------|-----------------|----------|
| 1 | 9633000014424 | Crankcase CPL | | 1.00 |
| 2 | J410001701402 | Grooved ball bearing 6303 | | 1.00 |
| 3 | J625063040 | DEEP GROOVE BALL BEARING 6304 | | 1.00 |
| 4 | 90230079000 | STOPPER BALANCER SHAFT BEARING | | 2.00 |
| 5 | J01665060123S | Hex collar screw, M6x12 | | 2.00 |
| 6 | 90130004004 | Bearing ball | | 1.00 |
| 8 | J618131912 | NEEDLE ROLLER BEARING HK1312 | | 1.00 |
| 9 | 90234030000 | BUSH SHIFT RAIL | | 2.00 |
| 10 | J760122455 | SHAFT SEALING RING 12X24X5,5 | | 1.00 |
| 11 | 0760122406 | Shaft seal ring 12x24x6 | | 1.00 |

| | | | | |
|----|---------------|--------------------------------|-------------|------|
| 14 | 90240018000 | BUSH STARTER SHAFT | | 1.00 |
| 16 | J400002201600 | bearing roller | | 1.00 |
| 17 | J410001501300 | bearing ball id15xod42xt13xc3l | | 1.00 |
| 18 | 90230022000 | Pipe breather | | 1.00 |
| 19 | J011050133 | HH COLLAR SCREW M5X13 SW8 | | 2.00 |
| 20 | J618131912 | NEEDLE ROLLER BEARING HK1312 | | 1.00 |
| 21 | 90130003004 | Seal - oil | | 1.00 |
| 22 | J760003447000 | Seal Oil | | 1.00 |
| 23 | 0738060101S | Oval head screw M6X10 precoat | | 1.00 |
| 24 | 96330066000 | PLATE STOPPER | | 1.00 |
| 25 | 96330064000 | NOZZLE JET OIL | | 1.00 |
| 26 | 90130164000 | OIL NOZZLE | | 1.00 |
| 27 | 96311023000 | SENSOR INDICATOR GEAR | | 1.00 |
| 28 | J770002024000 | O RING | | 1.00 |
| 29 | J025050163S | FLANGED BOLT M5X16 | | 2.00 |
| 30 | 96339034000 | SENSOR ASSEMBLY PICK UP | | 1.00 |
| 31 | J025060350 | FLANGED BOLT M6X35 WS8 | | 6.00 |
| 32 | J900000607002 | bolt flanged M6x70 | | 6.00 |
| 33 | 96330047000 | guard chain | | 1.00 |
| 34 | J005060123S | SCREW PAN CROSS M6X12 PH SS | | 3.00 |
| 35 | 96303096000 | Cover Rear LH | | 1.00 |
| 36 | J900000601607 | SCREW SOCKET M6X1 | | 3.00 |
| 37 | 90238029003 | OIL NOZZLE | | 1.00 |
| 38 | 90230066300 | OIL NOZZLE | | 1.00 |
| 39 | 90130024000 | PIN DOWEL 8X6,4X14MM | 14mm length | 1.00 |
| 40 | 96340022020 | RETAINER GEAR STARTER | | 1.00 |
| 41 | J025060141 | Hex collar screw M6X14 | | 1.00 |
| 42 | 90130003007 | DOWEL D14 | | 3.00 |
| 43 | 90130024000 | PIN DOWEL 8X6,4X14MM | 14mm length | 2.00 |
| 44 | J900000802004 | Hexagonal bolt M8x20 | | 2.00 |
| 45 | J690000815000 | plain washer | | 1.00 |
| 46 | J780001515000 | O-ring | | 1.00 |
| 47 | J900000607003 | bolt flanged M6x1 | | 4.00 |