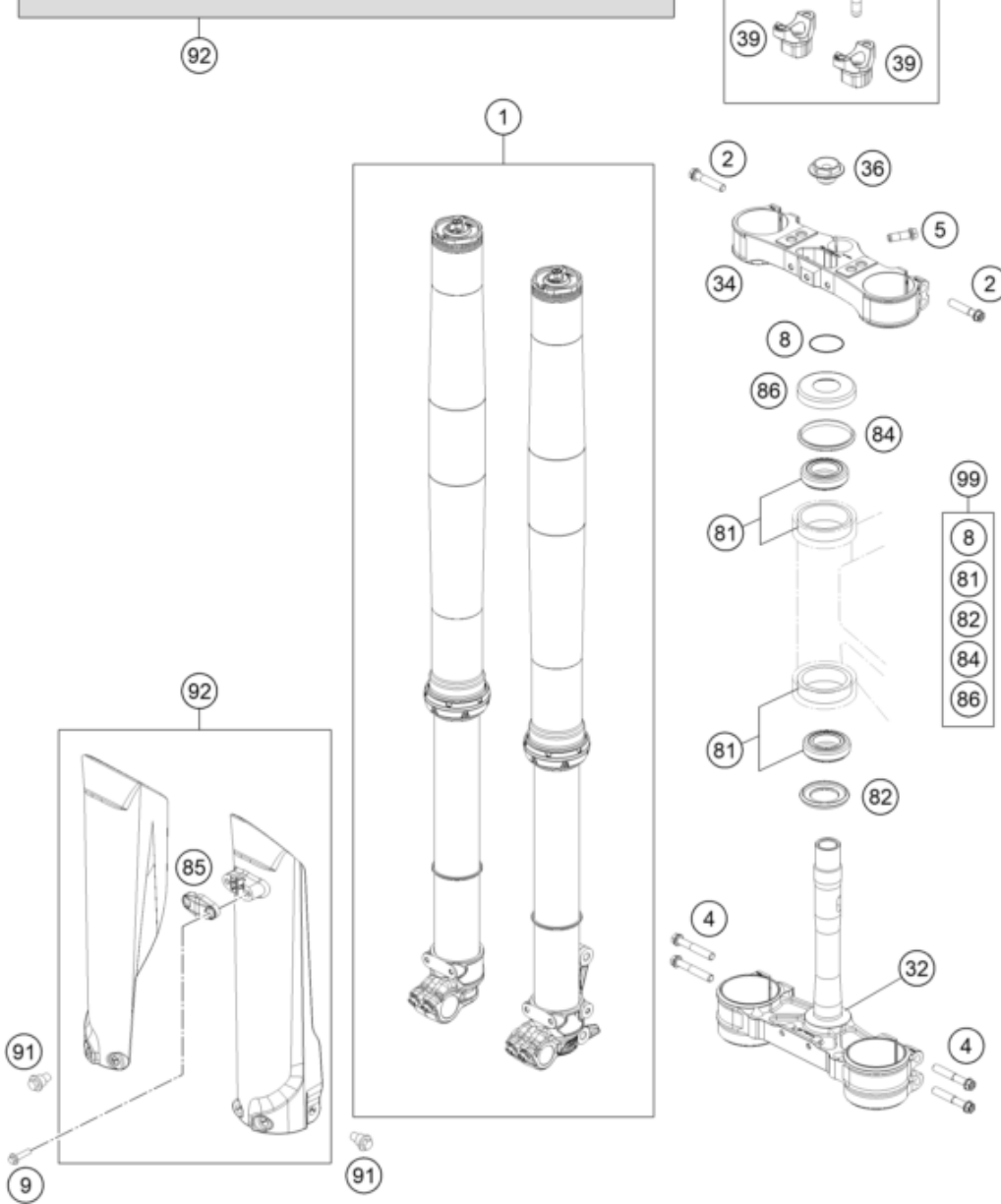


Nur gegen Austausch erhältlich!
Lieferung erfolgt nur nach Rückgabe des beschädigten Aufklebers
an die länderspezifische Kontaktperson!

Only for replacement!
Delivery only follows after returning the damaged sticker
to your After Sales contact person!



| Pos | Part Number | Description | Additional Text | Quantity |
|-----|-----------------|-------------------------------|-----------------|----------|
| 1 | 0797C164V401000 | Fork KTM 250/300 EXC/XC-W 22 | | 1.00 |
| 2 | 0025080406 | HH COLLAR SCREW M8X40 TX40 | | 4.00 |
| 3 | 0025080256 | HH collar screw M8x25 | | 4.00 |
| 4 | 0025080506 | HH collar screw M8x50 TX40 | | 4.00 |
| 5 | 0015080256 | SK.COLLAR WASHER M 8X25 SW=10 | | 1.00 |
| 6 | 0032100356S | AH-COLLAR SCREW M10X35 ISA45 | | 2.00 |
| 8 | 0770025035 | O-RING 25X3,55 NBR70 05 | | 1.00 |
| 9 | 0017060206 | SCREW F. PLASTIC K60X20AL SW6 | | 2.00 |
| 32 | 7770123202204 | Triple clamp bottom cmpl. | | 1.00 |
| 34 | 7720113402204 | Triple clamp X=22mm | | 1.00 |
| 36 | 70009082000 | AXLESCREW M20X1.5 SW17 | | 1.00 |

| | | | | |
|----|----------------|--------------------------------|------------|------|
| 38 | 77201038000 | HANDLEBAR CLAMP 28MM | | 2.00 |
| 39 | 59401039032 | Handlebar mount D28mm-H32mm | | 0.00 |
| 39 | 59401039037 | Handlebar mount D28mm-H37mm | | 2.00 |
| 39 | 59401039042 | Handlebar mount D28mm-H42mm | | 0.00 |
| 81 | 54201081100 | TAPERED ROLLER BEARING CPL. 06 | | 2.00 |
| 82 | 77701084000 | O-RING SUPPORT W. SEALING LIP | | 1.00 |
| 84 | 54601184000 | STEERING HEAD GASKET TOP | | 1.00 |
| 85 | 7770108510030 | Clamp for brake hose, black | | 1.00 |
| 86 | 78101086000 | STEERING HEAD COVER | | 1.00 |
| 91 | 59001092050 | SPECIAL SCREW M6X12,5 WS=8 | | 6.00 |
| 92 | 77701094100EBR | Fork protection kit Erzbergrod | with decal | 1.00 |
| 98 | 00050000921 | HANDLEBAR SUPPORT KIT D28/H37 | | 0.00 |
| 99 | 00050000930 | STEERING HEAD REP. KIT 06-15 | | 0.00 |