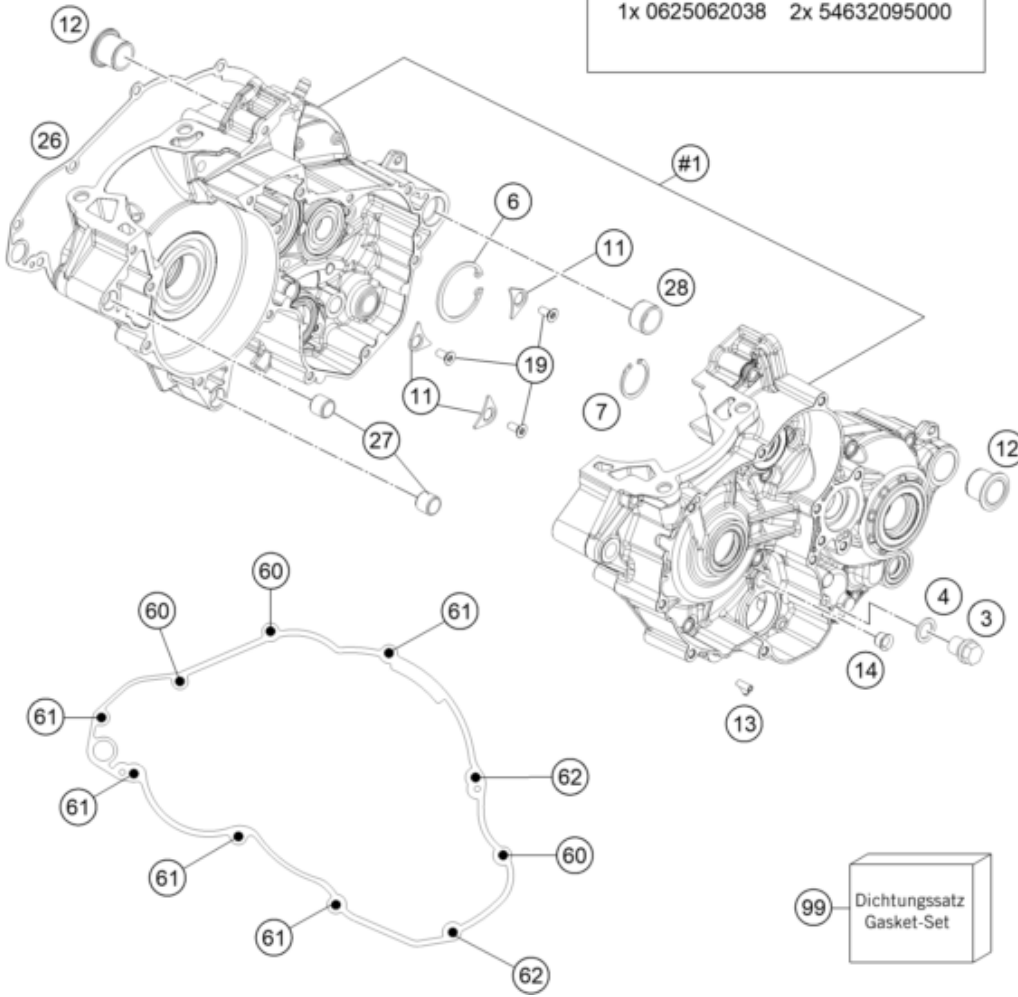


- | | | | | |
|---------------------------------------|------------------|----|----|----|
| #1 | 3 | 4 | 11 | 12 |
| 14 | 19 | 27 | 28 | |
| + WELLENDICHTRINGE / SEAL RING | | | | |
| 1x 0760142460 | 1x 47030076100 | | | |
| 1x 0760253570 | 1x 0760324571 | | | |
| 1x 0760385273 | | | | |
| + LAGER / BEARINGS | | | | |
| 1x 56530123200 | 1x 79234012010 | | | |
| 1x 0625160040 | 1x 0625006065 | | | |
| 1x 49030023000 | 1x 0410002500700 | | | |
| 1x 55430058000 | 1x 0625062054 | | | |
| 1x 0625623204 | 1x 0625063022 | | | |
| 1x 0625062038 | 2x 54632095000 | | | |



Pos	Part Number	Description	Additional Text	Quantity
1	A44030000044	Engine case cmpl.		1.00
3	58030021100	oil drain plug with magnet		1.00
4	58038022000	CU-seal ring DIN7603-12X18X1.5		1.00
6	0472042175	CIRCLIP DIN0472-42X1,75		1.00
7	55430059100	CIRCLIP DIN0472-28X1,2		1.00
11	75030085100	Retaining bracket crankshaft b		3.00
12	79230010000	Housing bush		2.00
13	45130022000	ANGLE PIECE 50CCM LC 2001		1.00
14	55540031000	Collar bushing		1.00
19	0019050121S	INT. TORX FLAT HEAD M5X12 T25		3.00
26	A44030025000	Clutch cover gasket, inner		1.00
27	54630027000	DOWEL BUSHING 13,8X11X12		2.00

28	54830027100	Dowel, 21x12		1.00
60	0025060606	HH collar screw M6x60 TX30		4.00
61	0025060406	HH collar screw M6x40 TX30		10.00
99	A44030099000	Gasket kit Engine MX 250/300		0.00