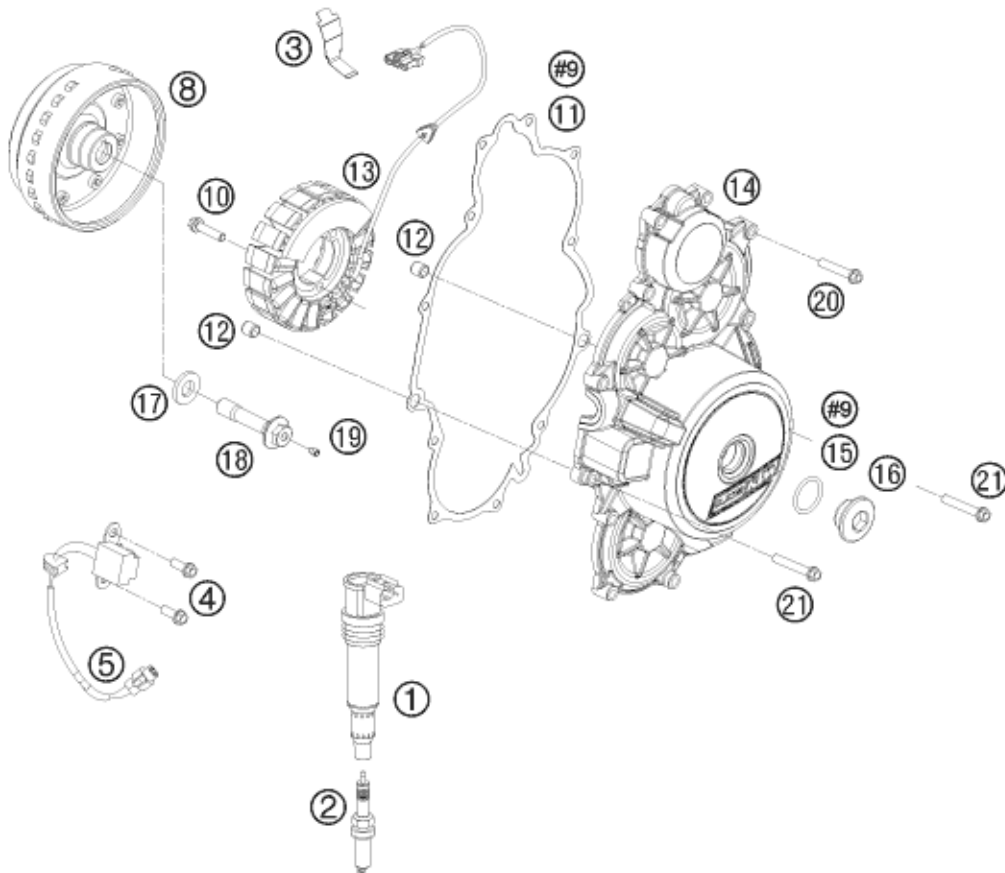


#9 ENTHALTEN IM DICHTSATZ MOTOR KPL.
INCLUDED IN GASKET-SET ENGINE CPL.



Pos	Part Number	Description	Additional Text	Quantity
1	60039006000	STICK COIL 03		2.00
2	61239093200	SPARK PLUG M12X1,25 08		2.00
3	60039040020	generator line bracket		1.00
4	0025050166	HH collar screw M5x16 TX30		2.00
5	59039034000	pulse generator KOKUSAN 4K3-A/		1.00
8	61239005000	FLYWHEEL CPL. 08		1.00
10	0025060256	HH collar screw M6x25 TX30		3.00
11	61230040000	IGNITION COVER GASKET 08		1.00
12	49030090000	DOWEL 9,8 X 7 X 10	FS-E	2.00
13	61239004000	STATOR		1.00
14*	6123000204441	IGNITION COVER WITH BEARING		1.00
15	0770024025	O-RING 24X2,5 NBR		1.00
16	6003009400030	threaded plug M24x1.5 PA 6.6		1.00
17	61239003050	WASHER 12,5/25/3		1.00
18	61239003000	SCREW M12X1,5		1.00
19	80030058060	OIL JET "60" M4		1.00
20	0025060306	HH collar screw M6x30 TX30		10.00
21	0025060356	HH collar screw M6x35 TX30		2.00

* = New part