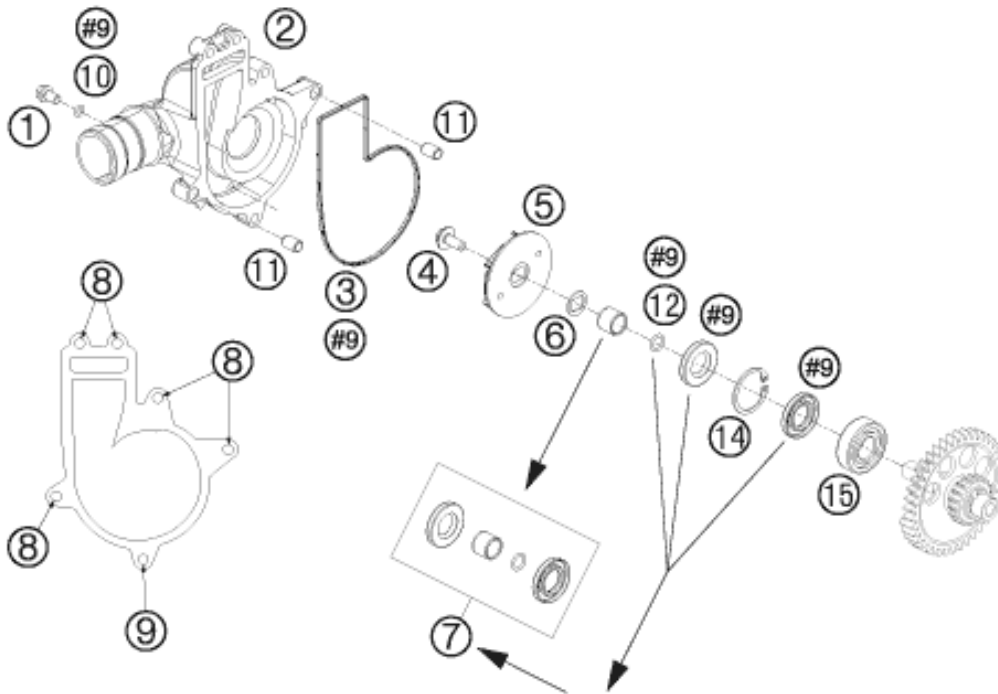


#9 ENTHALTEN IM DICHTSATZ MOTOR KPL.
 INCLUDED IN GASKET-SET ENGINE CPL.



ACHTUNG !!!
 Mit den Wellendichtringen auch
 die Verschleissbuchse + O-Ring
 wechseln.

CAUTION !!!
 With the shaft seal rings also
 change the wear bushing + O-ring.



Pos	Part Number	Description	Additional Text	Quantity
1	0015060103	HH COLLAR SCREW M 6X10 WS=8	FC	1.00
2	61235052000	WATER PUMP COVER 08		1.00
3	61235061000	MOLDED RING WATER PUMP COV. 08		1.00
4	0014060133	HH COLLAR SCREW M 6X13 WS=8		1.00
5	61235055000	WATER PUMP ROTOR 08		1.00
6	60035055150	double-d washer 16x1 SST		1.00
7	61235065044	WEAR BUSHING WITH SEAL RING		1.00
8	0015060453	HH COLLAR SCREW M 6X45 WS=8	525 SMR	5.00
9	0015060253	HH COLLAR SCREW M 6X25 WS=8		1.00
10	0770050012	O-RING 5,0X1,2 NBR 70		1.00
11	59030023000	dowel sleeve 6x8x11.5		2.00
12	0770090015	O-RING 9X1,5 NBR		1.00
14	04720300121	CIRCLIP DIN0472-30X1,2 NIRO		1.00
15	0412153511	CYL.ROLLER BEAR. NJ202 ECP C3		1.00