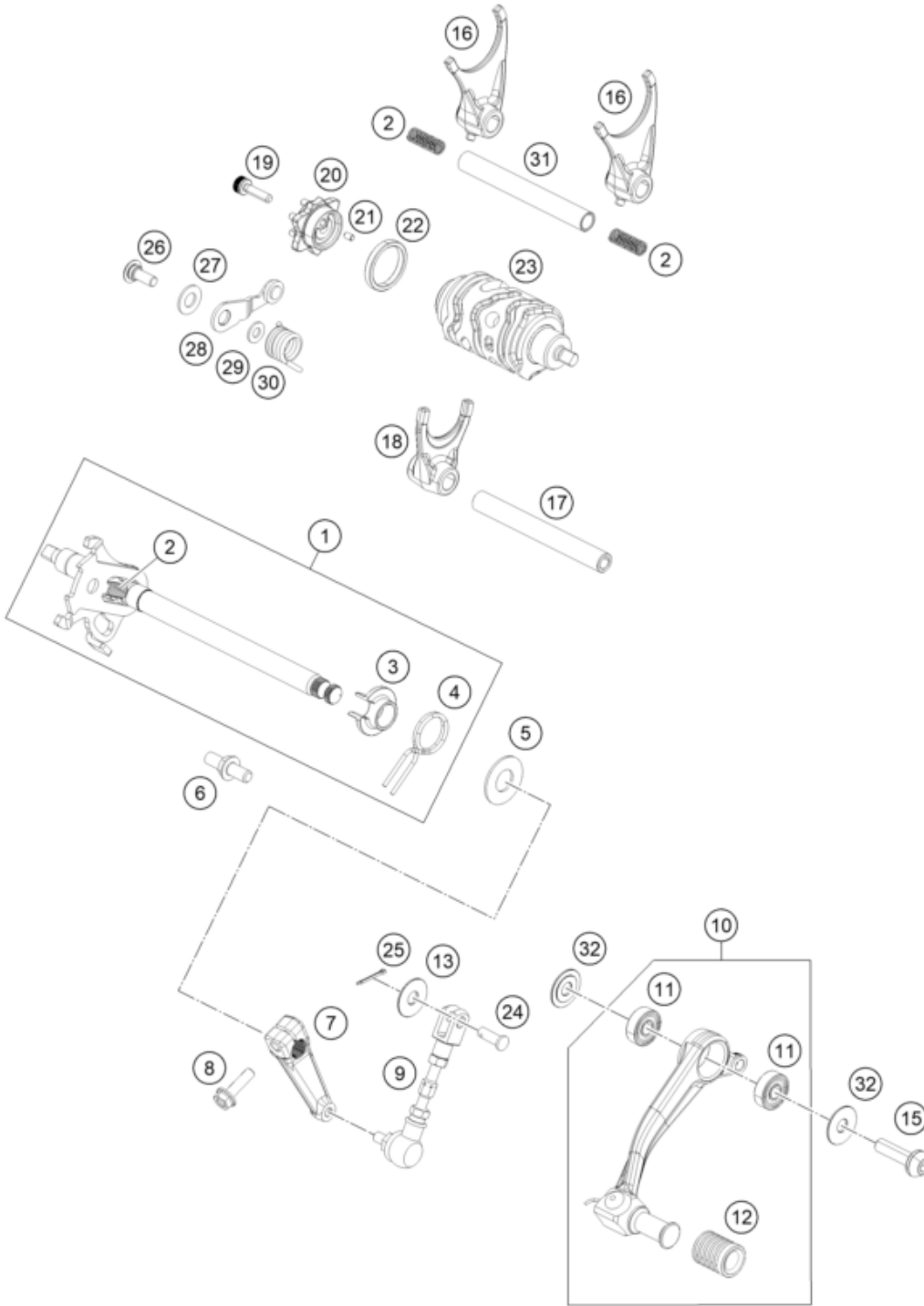


Skalierung: 50%, 75%



| Pos | Part Number | Description | Additional Text | Quantity |
|-----|-------------|--------------------------------|-----------------|----------|
| 1 | 90234005033 | SHIFT SHAFT CPL. | | 1.00 |
| 2 | 90234039000 | SPRING SHIFT RAIL | | 3.00 |
| 3 | 90134022000 | SPRING BUSHING | | 1.00 |
| 4 | 90134014000 | RETURN SPRING | | 1.00 |
| 5 | 90134050000 | STOP DISK 14X30X1,5 | | 1.00 |
| 6 | 90134016000 | SPRING GUIDE | | 1.00 |
| 7 | 93034031010 | Linkage gear shift lever | | 1.00 |
| 8 | J025060221 | Bolt-Flange-Kad ST-D DIA-06 L- | | 1.00 |
| 9 | 95834036000 | Shift linkage | | 1.00 |
| 10 | 95834031044 | Gear shift lever, PREASSEMBLED | | 1.00 |

| | | | | |
|----|---------------|--------------------------------|--------|------|
| 11 | J625060800 | BALL BEARING 608 | | 2.00 |
| 12 | 95834035000 | Pedal rubber | | 1.00 |
| 13 | J125070001 | Washer nylon 6.5X16X1 | | 1.00 |
| 15 | 90134034300 | BOLT SHIFT LEVER | silver | 1.00 |
| 15 | 90534034300 | BOLT SHIFT LEVER | black | 1.00 |
| 16 | 90234002000 | SHIFT FORK | | 2.00 |
| 17 | 90234019000 | SHIFT RAIL | | 1.00 |
| 18 | 90234001000 | SHIFT FORK | | 1.00 |
| 19 | 90134098000 | Bolt socket head M6X1X20 L-pre | | 1.00 |
| 20 | 90134015000 | SHIFT DRUM LOCATING | | 1.00 |
| 21 | 90134013000 | Parallel pin | | 1.00 |
| 22 | 90134012002 | SPACER | | 1.00 |
| 23 | 93834012000 | DRUM GEAR SHIFT | | 1.00 |
| 24 | J920000601600 | Pin | | 1.00 |
| 25 | J710000400600 | circlip type e | | 1.00 |
| 26 | 90134025000 | SCREW LOCKING LEVER | | 1.00 |
| 27 | 90134030000 | WASHER LOCKING LEVER | | 1.00 |
| 28 | 90134024033 | LOCKING LEVER CPL. | | 1.00 |
| 29 | J125061416 | Washer, 6x14x1.2 | | 1.00 |
| 30 | 90134023000 | ARRESTING LEVER SPRING | | 1.00 |
| 31 | 93834020000 | Gear shift rail | | 1.00 |
| 32 | 90534031020 | WASHER SHIFTING LEVER | | 2.00 |