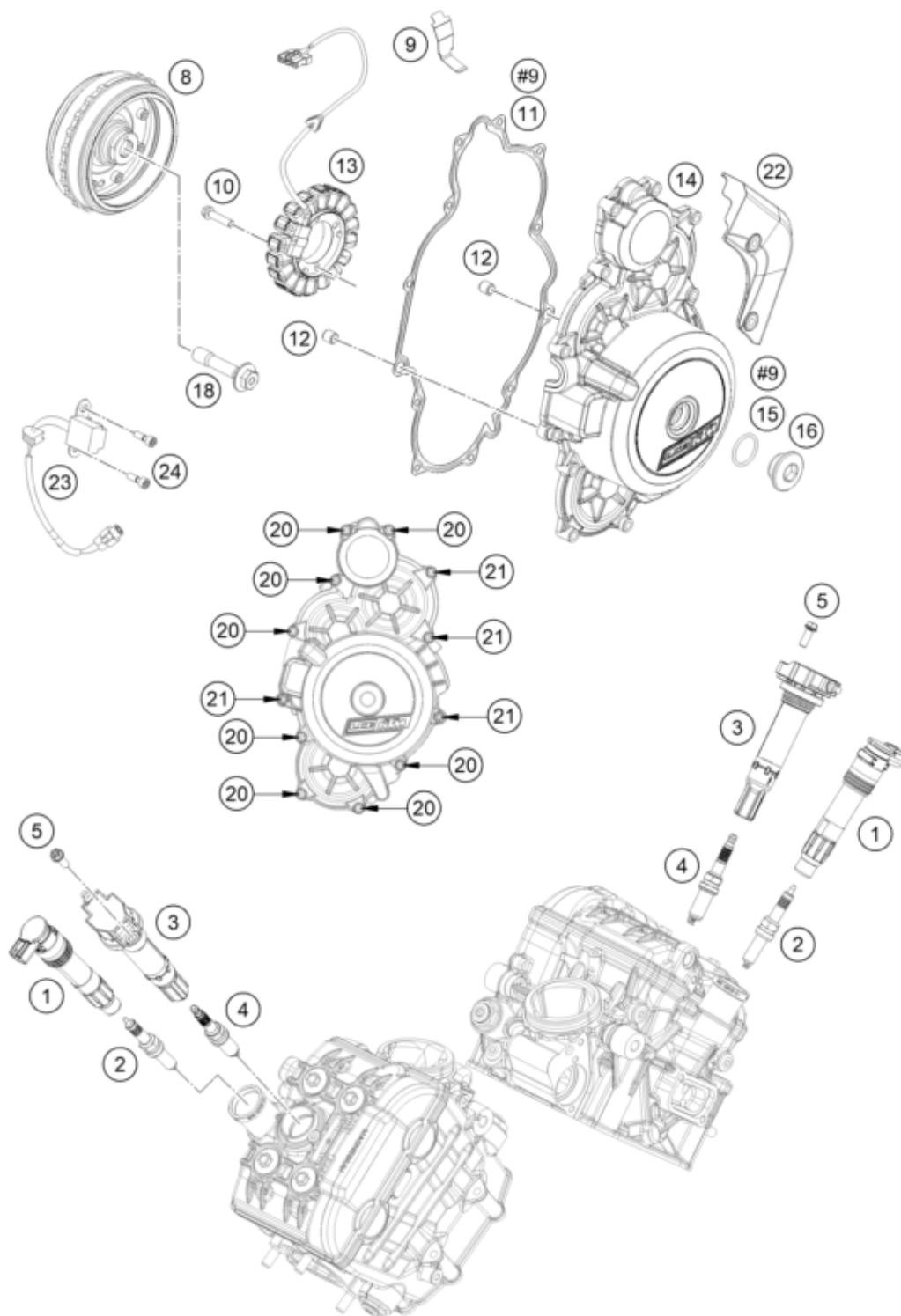


#9 ENTHALTEN IM DICHTSATZ MOTOR KPL.  
INCLUDED IN GASKET-SET ENGINE CPL.



| Pos | Part Number | Description                | Additional Text | Quantity |
|-----|-------------|----------------------------|-----------------|----------|
| 1   | 76039006000 | STICK COIL                 |                 | 2.00     |
| 2   | 60439094000 | SPARK PLUG                 |                 | 2.00     |
| 3   | 63539006100 | Stick coil                 |                 | 2.00     |
| 4   | 61739093000 | Spark plug M12x1.25        |                 | 2.00     |
| 5   | 0025060166  | HH collar screw M6x16 TX30 |                 | 2.00     |
| 8   | 61539005000 | Rotor complete             |                 | 1.00     |
| 9   | 60039040020 | generator line bracket     |                 | 1.00     |

|    |               |                                |      |      |
|----|---------------|--------------------------------|------|------|
| 10 | 0025060256S   | SK-BUNDSCHRAUBE M6X25 ISA30    |      | 4.00 |
| 11 | 61230040100   | GASKET GENERATORCOVER          |      | 1.00 |
| 12 | 49030090000   | DOWEL 9,8 X 7 X 10             | FS-E | 2.00 |
| 13 | 60339004000   | STATOR                         |      | 1.00 |
| 14 | 6023010214441 | IGNITION COVER WITH BEARINGS   |      | 1.00 |
| 15 | 07700240251   | o-ring 24.00x2.50 Viton        |      | 1.00 |
| 16 | 6003009400030 | threaded plug M24x1.5 PA 6.6   |      | 1.00 |
| 18 | 60339003000   | special screw M12x1.5 WS15     |      | 1.00 |
| 20 | 0025060306    | HH collar screw M6x30 TX30     |      | 8.00 |
| 21 | 0025060356    | HH collar screw M6x35 TX30     |      | 4.00 |
| 22 | 61411095000   | Plug cover                     |      | 1.00 |
| 23 | 59039034000   | pulse generator KOKUSAN 4K3-A/ |      | 1.00 |
| 24 | 60339035000   | SPECIAL SCREW M5X16            |      | 2.00 |