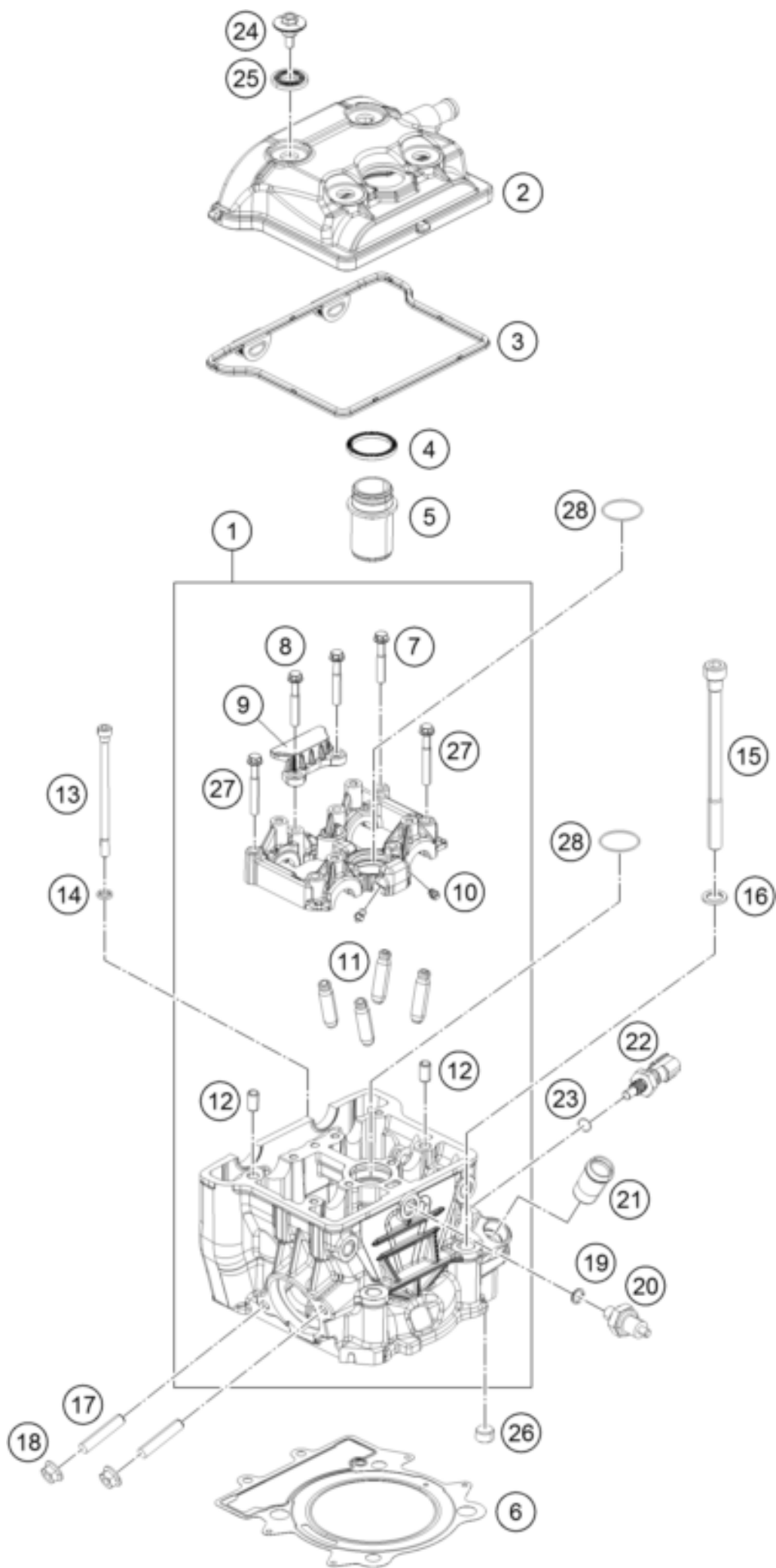




390 Adventure, orange - IKD 2020 <2020><AR><F5342T6>  
CYLINDER HEAD  
53558

---



| Pos | Part Number | Description                  | Additional Text | Quantity |
|-----|-------------|------------------------------|-----------------|----------|
| 1   | 93836020033 | Head Cylinder with Camholder |                 | 1.00     |
| 2   | 93336052100 | Valve mechanism cover cmpl.  |                 | 1.00     |
| 3   | 93836053000 | Gasket rubber                |                 | 1.00     |
| 4   | 90236054000 | GASKET SPARK PLUG SHAFT      |                 | 1.00     |
| 5   | 90236074000 | SPARK PLUG SHAFT             |                 | 1.00     |
| 6   | 93830036000 | Gasket Cylinder Head         |                 | 1.00     |
| 7   | J025060359  | Hexagon screw M6X35          |                 | 4.00     |
| 8   | J025060453  | HH COLLAR SCREW M6X45        |                 | 2.00     |
| 9   | 90236018000 | CHAIN GUIDE TOP              |                 | 1.00     |
| 10  | 90130064000 | OIL JET                      |                 | 4.00     |
| 11  | 90236025000 | VALVE GUIDE                  |                 | 4.00     |
| 12  | 90130024000 | PIN DOWEL 8X6,4X14MM         |                 | 2.00     |
| 13  | J912061026  | intake funnel                |                 | 2.00     |
| 14  | J125070003  | WASHER 7X11X2                |                 | 2.00     |
| 15  | J912101449  | SOCKET HEAD SCREW M10X144    |                 | 4.00     |
| 16  | J125110003  | WASHER 11,2X18X2             |                 | 4.00     |
| 17  | 90136020001 | STUD M8                      |                 | 2.00     |
| 18  | J926080003  | Hex collar nut M6            |                 | 2.00     |
| 19  | 90138091001 | O-RING                       |                 | 1.00     |
| 20  | 90138091000 | OIL PRESSURE SENSOR          |                 | 1.00     |
| 21  | 90235019000 | PIPE COOLANT                 |                 | 1.00     |
| 22  | 90135047000 | TEMPERATURE SENSOR           |                 | 1.00     |
| 23  | 90135047001 | O-RING                       |                 | 1.00     |
| 24  | 90136052020 | VALVE COVER SCREW            |                 | 4.00     |
| 25  | 90136052010 | DECOUPLING ELEMENT           |                 | 4.00     |
| 26  | 90236024000 | PLUG                         |                 | 1.00     |
| 27  | J025060401  | HH COLLAR SCREW M6X40        |                 | 2.00     |
| 28  | J770029819  | O-RING 29,8X1,9              |                 | 2.00     |