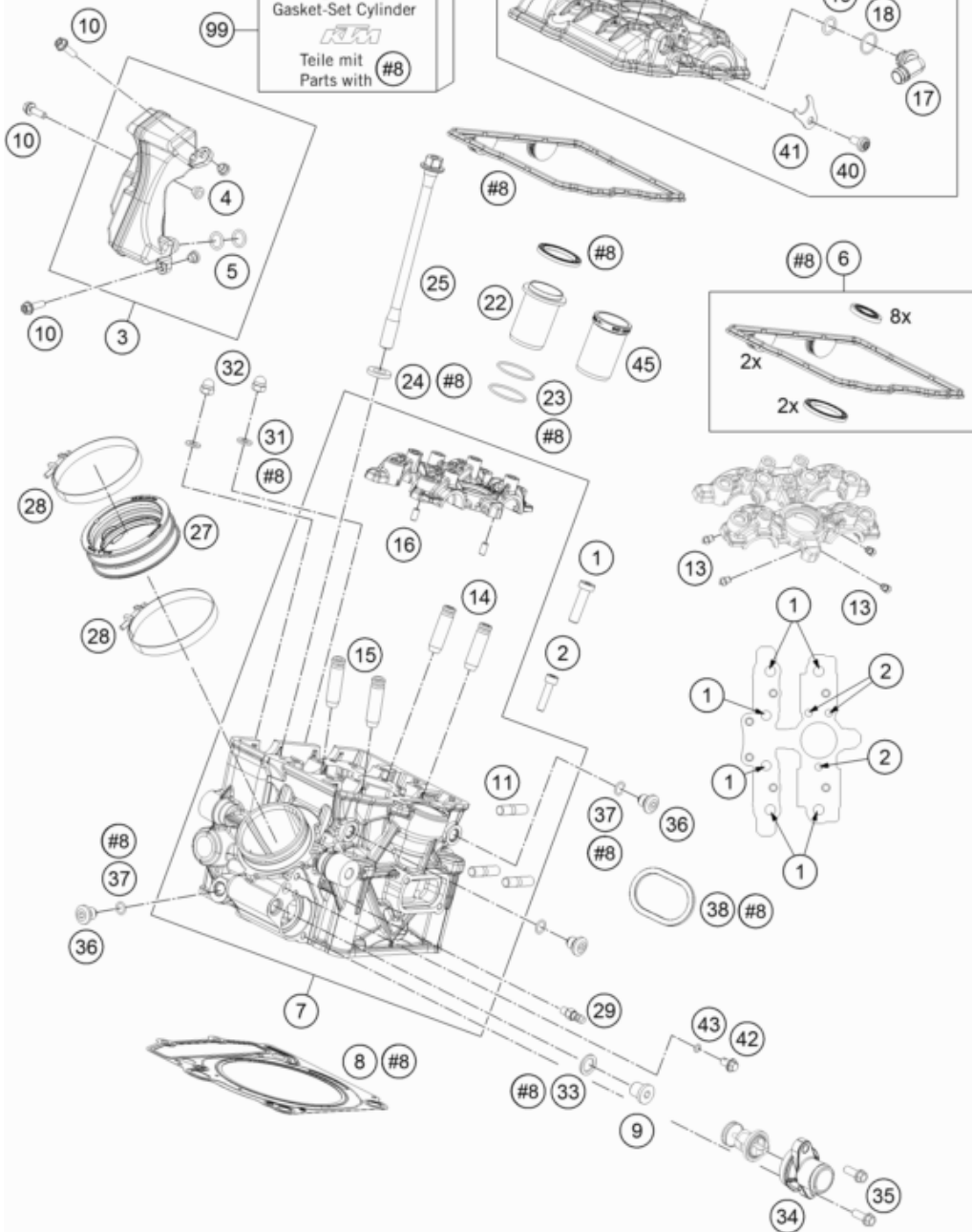


DICHTSATZ MOTOR KPL.
ENTHÄLT DICHTSATZ ZYLINDER+KOPF VORNE+HINTEN
GASKET-SET ENGINE CPL.
INCL. GASKET-SET CYLINDER+HEAD FRONT+REAR

Dichtungssatz Zylinder
Gasket-Set Cylinder

Teile mit
Parts with #8



Pos	Part Number	Description	Additional Text	Quantity
1	0984080305	AH SCREW DIN7984-M 8X30 10.9		6.00
2	0912060255	AH SCREW DIN0912-M 6X25 10.9		3.00
3	60736065000	RESONATOR KPL.		3.00
4	78003023070	SPACER BUSH. SPRING BRACKET		3.00
5	0770110021	O-RING 11X2 VITON	FOR EXC+MXC GAS COCK	2.00
6	61236099100	VALVE COVER GASKET SET		1.00
7	6073612000024	Cylinder head rear		1.00
8	61330036085	CYLINDER HEAD GASKET 0,85		1.00
9	0908120153	threaded plug DIN 908 M12x1.5	DUKE	1.00
10	0025050166	HH collar screw M5x16 TX30		3.00

11	0835080165	STUD M 8X16 10.9		3.00
13	60030063050	oil jet 50 M5		4.00
14	61236026001	VALVE GUIDE EXHAUST 08		2.00
15	61236025001	VALVE GIUDE INTAKE 6MM		2.00
16	0402050980	needle roller DIN 5402 5x9.8		2.00
17	61236082200	Elbow fitting		1.00
18	0770150151	O-RING 15,00X1,50 VITON		1.00
19	0770120020	O-RING 12,00X2,00 NBR 70		1.00
20	6123615214433	VALVE COVER REAR		1.00
21	60036052020	collar screw M 6 WS=10 03		4.00
22	61336075100	SPARK PLUG SHAFT		1.00
23	0770298178	O-RING 29,87X1,78 VITON		2.00
24	61236079050	WASHER 11,1X20X3 08		4.00
25	61236079000	CYLINDER HEAD SCREW 08		4.00
27	61336044000	INTAKE BOOT		1.00
28	61336048000	HOSE CLAMP GEMI 75		2.00
29	60036023200	VACUUM CONNECTION M6/0.75MM		1.00
31	0125060003	WASHER DIN0125-A 6,4		2.00
32	61230045000	CAP NUT M6 STAINLESS STEEL		2.00
33	58038022000	CU-seal ring DIN7603-12X18X1.5		1.00
34	61235019100	WATER CONNECTION CPL.		1.00
35	0025060206	HH collar screw M6x20 TX30		2.00
36	77336056095	SCREW PLUG		3.00
37	07700900151	O-RING 9x1,5 V80 SH		3.00
38	69005005100	EXHAUST PIPE FLANGE GASKET		1.00
40	0080060123	EJOT ALtracs 60x12 TX30		1.00
41	61236082150	connecting angle retaining pla		1.00
42	59036006090	VENT SCREW M6X10 CPL.		1.00
43	0770050012	O-RING 5,0X1,2 NBR 70		1.00
45	61336074100	INSERT SPARK-PLUG SHAFT		1.00
99	61330097000	GASKET SET CYLINDER+HEAD F+R		1.00