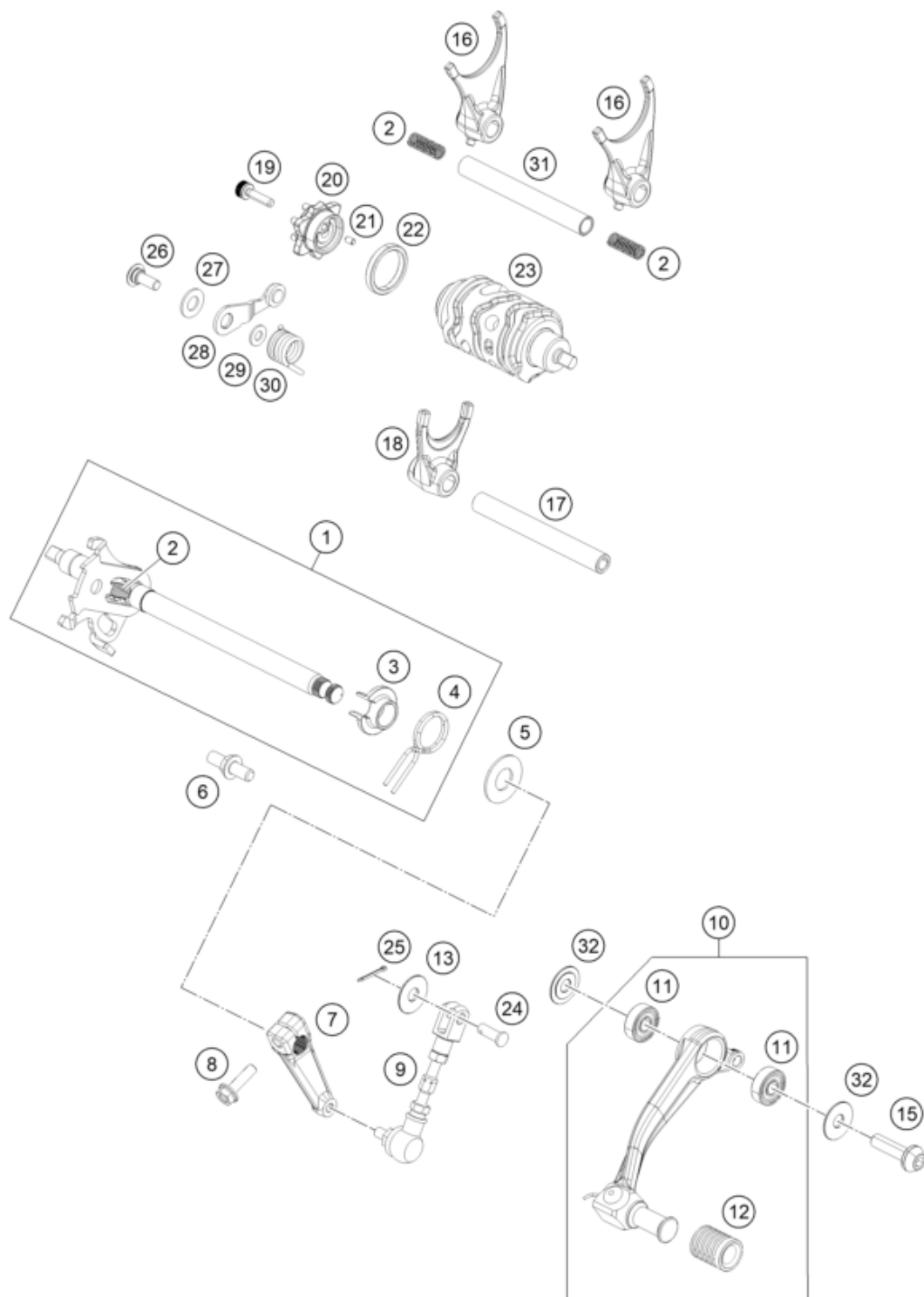


Skalierung: 50%, 75%



| Pos | Part Number | Description                     | Additional Text | Quantity |
|-----|-------------|---------------------------------|-----------------|----------|
| 1   | 94334005033 | Shift shaft compl. With quick s |                 | 1.00     |
| 2   | 90134009000 | TENSION SPRING                  |                 | 3.00     |
| 3   | 90134022000 | SPRING BUSHING                  |                 | 1.00     |
| 4   | 90134014000 | RETURN SPRING                   |                 | 1.00     |
| 5   | 90134050000 | STOP DISK 14X30X1,5             |                 | 1.00     |
| 6   | 90134016000 | SPRING GUIDE                    |                 | 1.00     |
| 7   | 93034031010 | Linkage gear shift lever        |                 | 1.00     |
| 8   | J025060221  | Bolt-Flange-Kad ST-D DIA-06 L-  |                 | 1.00     |
| 9   | 95834036000 | Shift linkage                   |                 | 1.00     |
| 10  | 95834031044 | Gear shift lever, PREASSEMBLED  |                 | 1.00     |

|    |               |                                |        |      |
|----|---------------|--------------------------------|--------|------|
| 11 | J625060800    | BALL BEARING 608               |        | 2.00 |
| 12 | 95834035000   | Pedal rubber                   |        | 1.00 |
| 13 | J125070001    | Washer nylon 6.5X16X1          |        | 1.00 |
| 15 | 90134034300   | BOLT SHIFT LEVER               | silver | 1.00 |
| 15 | 90534034300   | BOLT SHIFT LEVER               | black  | 1.00 |
| 16 | 90234002000   | SHIFT FORK                     |        | 2.00 |
| 17 | 90234019000   | SHIFT RAIL                     |        | 1.00 |
| 18 | 90234001000   | SHIFT FORK                     |        | 1.00 |
| 19 | 90134098000   | Bolt socket head M6X1X20 L-pre |        | 1.00 |
| 20 | 94334015000   | Detent                         |        | 1.00 |
| 21 | 90134013000   | Parallel pin                   |        | 1.00 |
| 22 | 90134012002   | SPACER                         |        | 1.00 |
| 23 | 93834012000   | DRUM GEAR SHIFT                |        | 1.00 |
| 24 | J920000601600 | Pin                            |        | 1.00 |
| 25 | J710000400600 | circlip type e                 |        | 1.00 |
| 26 | 90134025000   | SCREW LOCKING LEVER            |        | 1.00 |
| 27 | 90134030000   | WASHER LOCKING LEVER           |        | 1.00 |
| 28 | 90134024033   | LOCKING LEVER CPL.             |        | 1.00 |
| 29 | J125061416    | Washer, 6x14x1.2               |        | 1.00 |
| 30 | 94334023000   | Detent arm spring              |        | 1.00 |
| 31 | 93834020000   | Gear shift rail                |        | 1.00 |
| 32 | 90534031020   | WASHER SHIFTING LEVER          |        | 2.00 |