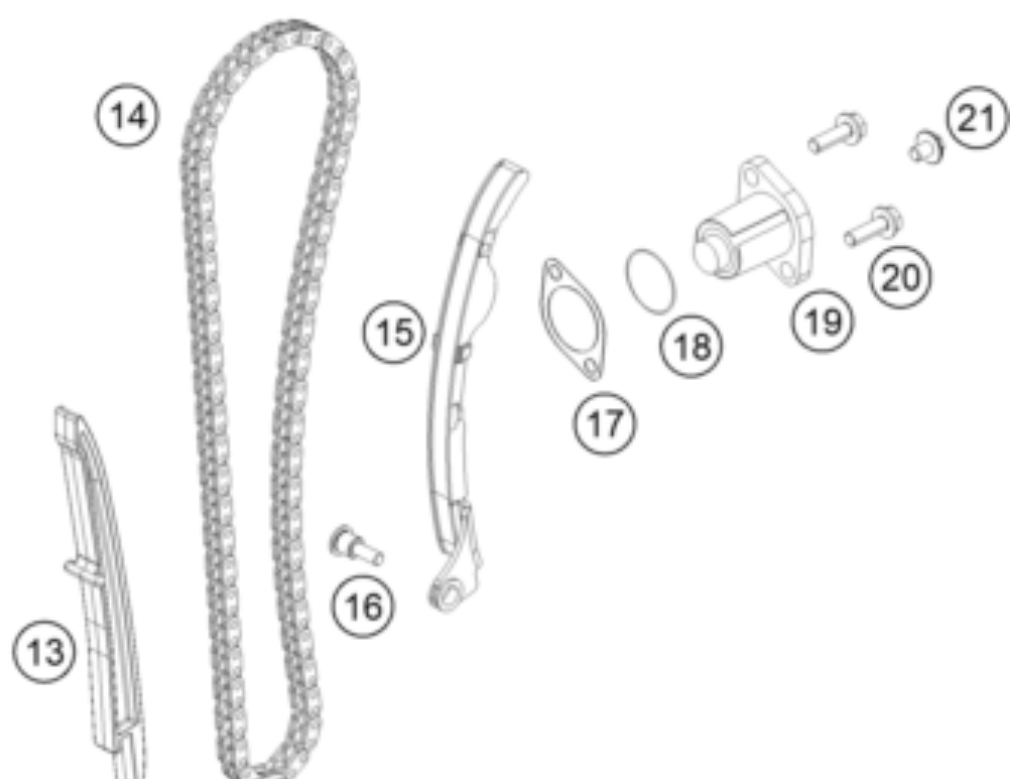
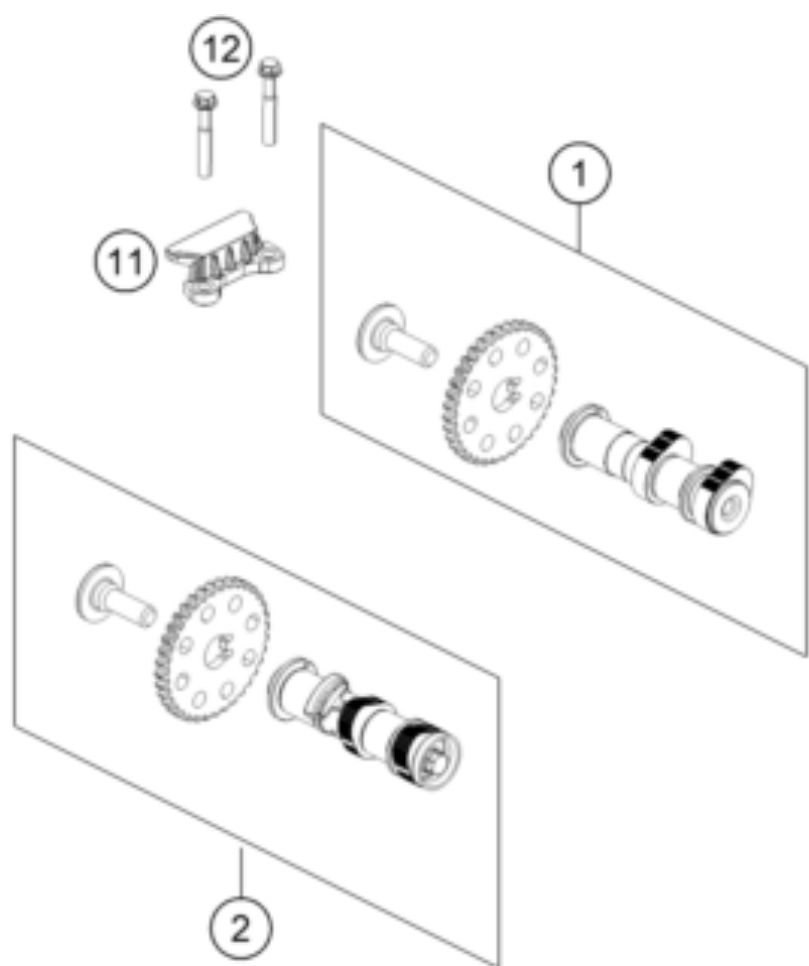




390 Duke, white 2018 <2018><CN><F4387R2>
TIMING DRIVE
50690



| Pos | Part Number | Description | Additional Text | Quantity |
|-----|-------------|------------------------|-----------------|----------|
| 1 | 90836009033 | CAMSHAFT INTAKE CPL. | | 1.00 |
| 2 | 90836010033 | CAMSHAFT EXHAUST CPL. | | 1.00 |
| 11 | 90236018000 | CHAIN GUIDE TOP | | 1.00 |
| 12 | J025060453 | HH COLLAR SCREW M6X45 | | 2.00 |
| 13 | 90236001000 | TIMING CHAIN GUIDE | | 1.00 |
| 14 | 90236013000 | TIMING CHAIN | | 1.00 |
| 15 | 90236002000 | TENSIONER RAIL CPL. | | 1.00 |
| 16 | 90236002004 | SCREW TENSIONER RAIL | | 1.00 |
| 17 | 90136003003 | GASKET CHAIN ADJUSTER | | 1.00 |
| 18 | J770010015 | O-RING 10,15X1,5 | | 1.00 |
| 19 | 90236003044 | CHAIN ADJUSTER | | 1.00 |
| 20 | J025060204 | Hex collar screw M6X20 | | 2.00 |
| 21 | 90136003002 | SPECIAL SCREW 6X6 | | 1.00 |