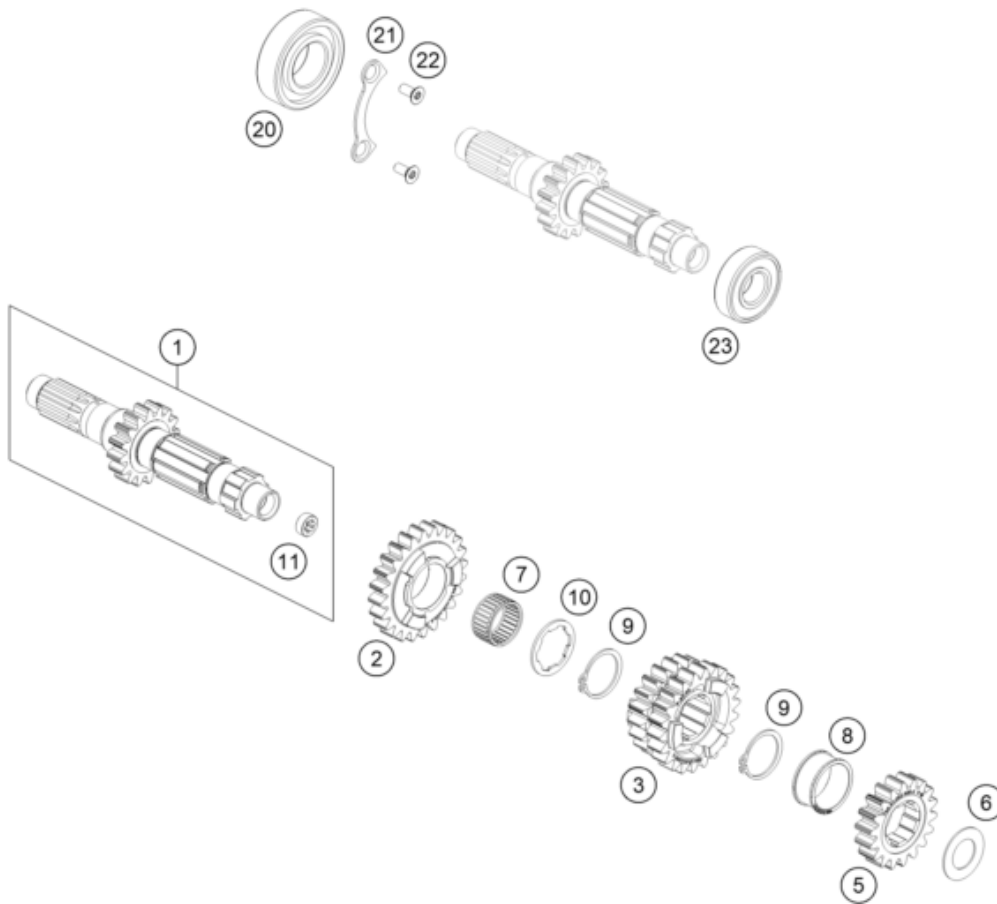


**ACHTUNG!**

Pankl Getriebe!  
 Ersatzteile nur für Motoren ab Seriennummer  
 879500107

**ATTENTION!**

Pankl gearbox!  
 Spare parts only for engines ascending from serial number  
 879500107



| Pos | Part Number | Description                    | Additional Text | Quantity |
|-----|-------------|--------------------------------|-----------------|----------|
| 1*  | 79533001000 | input shaft                    |                 | 1.00     |
| 2*  | 79533005000 | idler gear 5 th.               |                 | 1.00     |
| 3*  | 79533003000 | sliding gear 3./4.             |                 | 1.00     |
| 5*  | 79533002000 | fixed gear 2 nd.               |                 | 1.00     |
| 6   | 56033030000 | STOP DISC 17,2X30X1            |                 | 1.00     |
| 7   | 0405222613  | NEEDLE BEAR. K 22X26X13 TN     |                 | 1.00     |
| 8*  | 79533032000 | Spacer                         |                 | 1.00     |
| 9*  | 0417025000  | CIRCLIP SW25                   |                 | 2.00     |
| 10* | 79533034000 | thrust wahser                  |                 | 1.00     |
| 11  | 78033001110 | BUSHING                        |                 | 1.00     |
| 20* | 0625062056  | Groove ball bearing 6205 C4 NT |                 | 1.00     |
| 21  | 78033032000 | TAB WASHER BEARING MAIN SHAFT  |                 | 1.00     |
| 22  | 0019050121S | INT. TORX FLAT HEAD M5X12 T25  |                 | 2.00     |
| 23  | 0625062036  | BALL BEARING 6203 RSH C3       |                 | 1.00     |

\* = New part