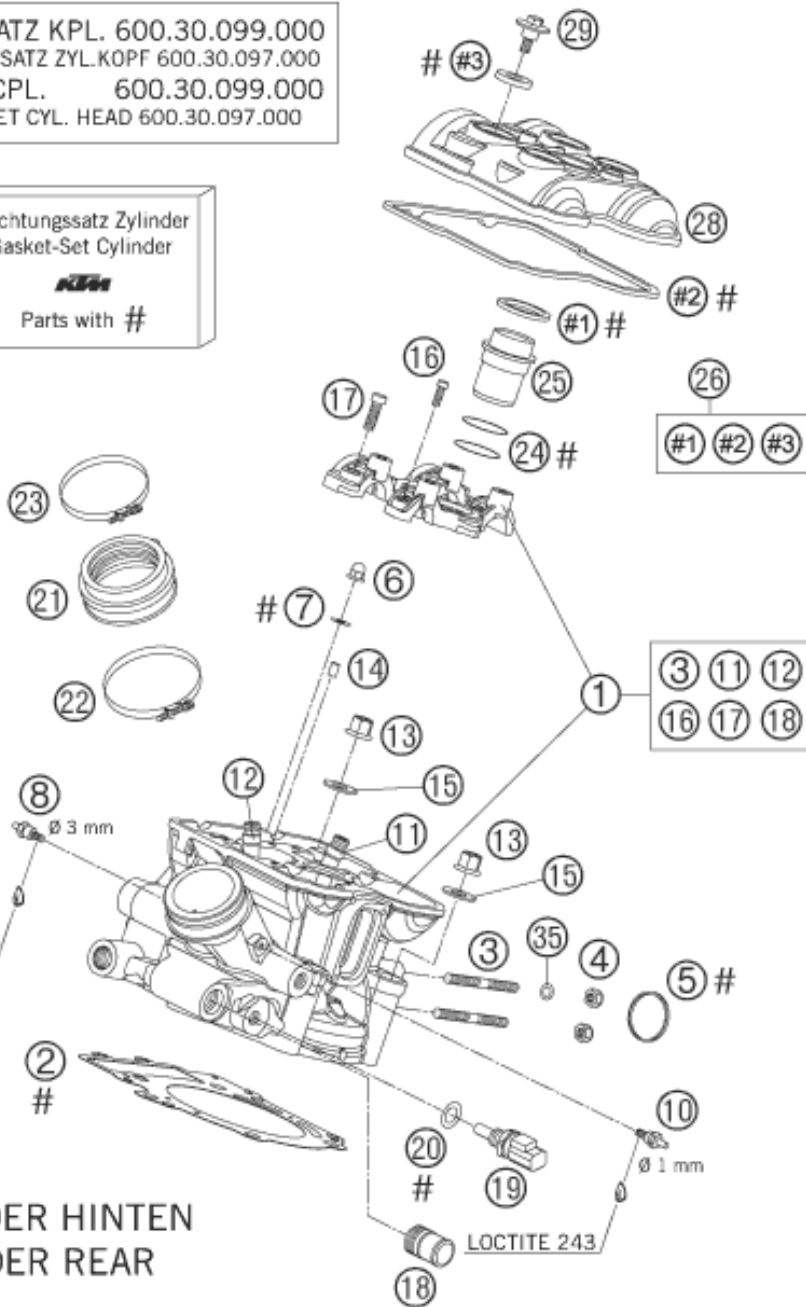
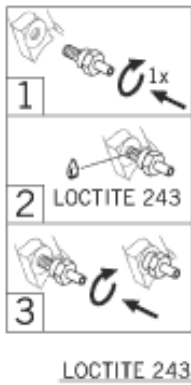


DICHTUNGSSATZ KPL. 600.30.099.000
ENTHÄLT DICHT.SATZ ZYL.KOPF 600.30.097.000
GASKET-SET CPL. 600.30.099.000
INCL. GASKET-SET CYL. HEAD 600.30.097.000



ZYLINDER HINTEN
CYLINDER REAR

Pos	Part Number	Description	Additional Text	Quantity
1	60036120144	CYLINDER HEAD CPL. REAR 05		1.00
2	60030036000	CYLINDER HEAD GASKET 0,5 101MM		1.00
3	0835080165	STUD M 8X16 10.9		2.00
4	51010086100	self-locking nut M8 Cu		2.00
5	60005005000	GASKET 03		1.00
6	0587060000	CAP NUT M6 DIN1587 02		2.00
7	0125060003	WASHER DIN0125-A 6,4		2.00
8	58336020190	VACUUM CONECTION M6/3MM '97	SECONDARY AIR SYSTEM	1.00
10	60036023000	VACUUM CONECT. M6/1MM M-GROOVE		1.00
11	60036026000	VALVE GUIDE EXHAUST 03		2.00
12	60036025000	VALVE GUIDE INTAKE 03		2.00
13	60036078200	hex collar nut M10 WS13		4.00
14	0402050980	needle roller DIN 5402 5x9.8		2.00

15	60036078050	SHIM 10,2X19X1,5MM 05		4.00
16	0912060255	AH SCREW DIN0912-M 6X25 10.9		4.00
17	0984080305	AH SCREW DIN7984-M 8X30 10.9		4.00
18	58030010200	SCREW IN NOZZLE M20X1,5		1.00
19	60011252000	TEMPERAT.-SENSOR WATER LC8 02	ONLY FOR LC4 ADVENTURE	1.00
20	0770100020	o-ring 10.00x2.00 silicone	ONLY FOR LC4 ADVENTURE	1.00
21	60036044000	INTAKE BOOT 03		1.00
22	60036047100	HOSE CLAMP GEMI 62 MM 03		1.00
23	59030061100	HOSE CLAMP GEMI 56MM 03		1.00
24	0770298178	O-RING 29,87X1,78 VITON		2.00
25	60036075000	INSERT SPARK-PLUG SHAFT LC8 03		1.00
26	60036099000	VALVE COVER GASKET SET FR+RR		1.00
28	60036152000	VALVE COVER REAR 03		1.00
29	60036052020	collar screw M 6 WS=10 03		4.00
35	61005009000	SPACER BUSH. 8,5X15X7,5 05		1.00
99	60030097000	GASKET SET CYL. HEAD KPL. 03	CYLINDER FRONT + REAR	1.00