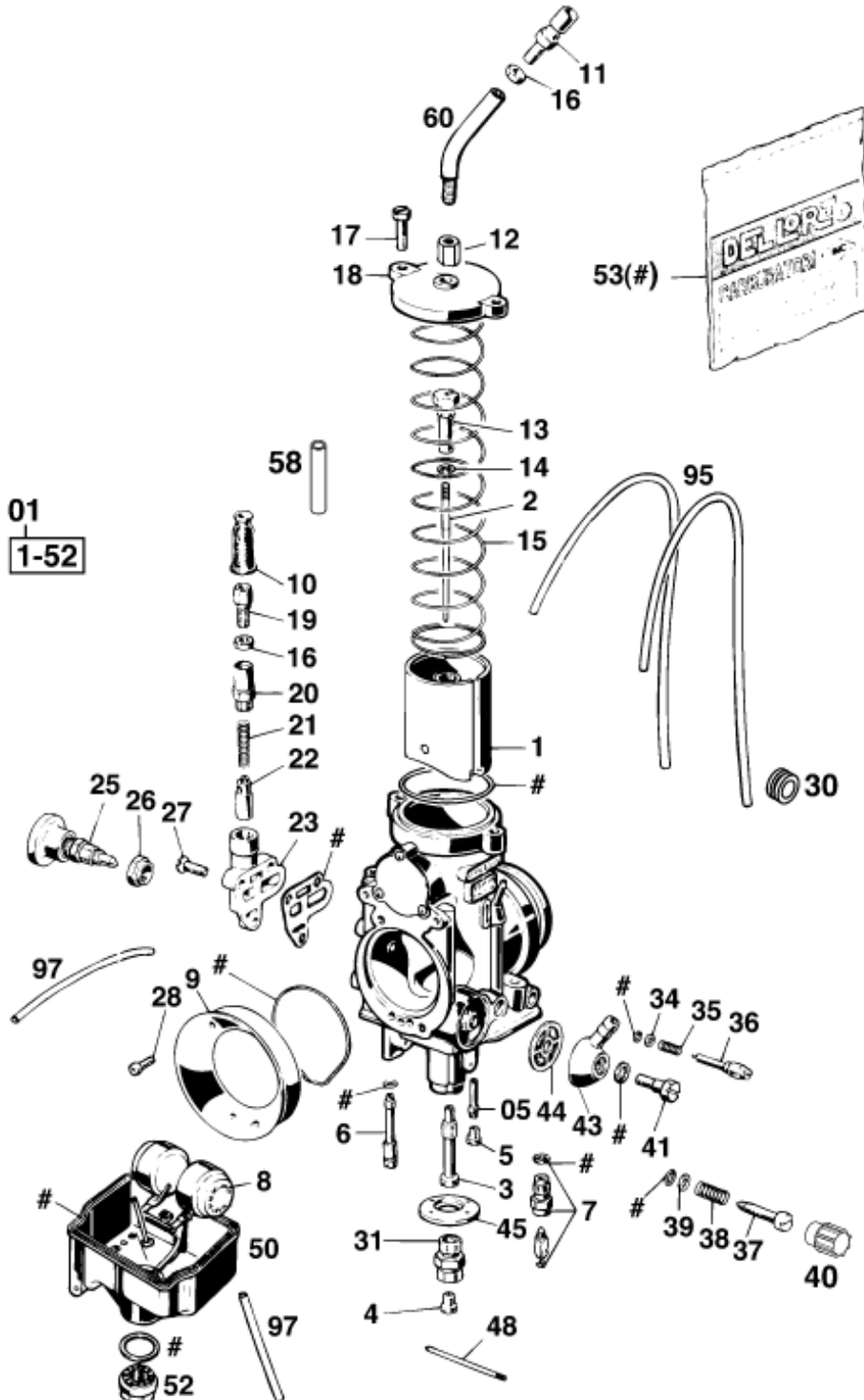


▲ **ACHTUNG !!!**  
 Vor dem Einbau des Vergasers, Bedüsung kontrollieren.  
**CAUTION !!!**  
 Before mounting the carburetor, check the jetting.



| Pos | Part Number | Description                 | Additional Text | Quantity |
|-----|-------------|-----------------------------|-----------------|----------|
| 1   | 58031135040 | THROTTLE VALVE N0.40        |                 | 1.00     |
| 1   | 58031901044 | CARBURETOR PHM 40 SD (4934) |                 | 1.00     |
| 2   | 49031134051 | JET NEEDLE K51              |                 | 1.00     |
| 3   | 58031121266 | NEEDLE JET DR 266           |                 | 0.00     |

|    |             |                                |  |      |
|----|-------------|--------------------------------|--|------|
| 3  | 58031121268 | NEEDLE JET DR 268              |  | 1.00 |
| 3  | 58031121270 | NEEDLE JET DR 270              |  | 0.00 |
| 3  | 58031121272 | NEEDLE JET DR 272              |  | 0.00 |
| 4  | 57031523135 | MAIN JET 135                   |  | 0.00 |
| 4  | 57031523140 | MAIN JET 140                   |  | 0.00 |
| 4  | 57031523145 | MAIN JET 145                   |  | 0.00 |
| 4  | 57031523150 | MAIN JET 150                   |  | 0.00 |
| 4  | 57031523155 | MAIN JET 155                   |  | 1.00 |
| 4  | 57031523160 | * MAIN JET 160                 |  | 0.00 |
| 4  | 57031523165 | MAIN JET 165                   |  | 0.00 |
| 4  | 57031523170 | MAIN JET 170                   |  | 0.00 |
| 4  | 57031523175 | MAIN JET 175                   |  | 0.00 |
| 4  | 57031523180 | MAIN JET 180                   |  | 0.00 |
| 5  | 15131123038 | JET 38                         |  | 0.00 |
| 5  | 15131123045 | JET 45                         |  | 1.00 |
| 5  | 15131123050 | JET 50                         |  | 0.00 |
| 5  | 49031122000 | IDLE MIXING TUBE NR.1 CD       |  | 1.00 |
| 6  | 57031551050 | STARTING JET 50                |  | 0.00 |
| 6  | 57031551055 | STARTING JET 55                |  | 1.00 |
| 7  | 57231120300 | NEEDLE VALVE 300               |  | 1.00 |
| 8  | 57031509000 | % FLOAT 8,5 GRAMME             |  | 0.00 |
| 8  | 58331509000 | FLOAT                          |  | 1.00 |
| 9  | 58031140040 | INTAKE TRUMPET 40 620LC4/DUKE  |  | 1.00 |
| 10 | 52031138000 | RUBBER SLEEVE                  |  | 0.00 |
| 11 | 57031525100 | ADJUSTMENT SCREW M6X0,75       |  | 1.00 |
| 12 | 58031528000 | SUPPORT BUSHING M6x0,75 WS=10  |  | 1.00 |
| 13 | 49031131000 | NIPPLE FOR THROTTLE VALVE      |  | 1.00 |
| 14 | 0799025055  | TAB WASHER DIN6799-RS 2,5      |  | 1.00 |
| 15 | 54431530000 | SLIDING SPRING 1,25X190        |  | 1.00 |
| 16 | 52031126000 | HEXAGON NUT M 6X0,75 DIN0439   |  | 2.00 |
| 17 | 57031524000 | HEXAGON NUT M 5X16             |  | 2.00 |
| 18 | 58031127000 | CARBURETOR COVER PLATE         |  | 1.00 |
| 19 | 57031525000 | ADJUSTMENT SCREW M6X0,75       |  | 1.00 |
| 20 | 57231155000 | PLUG                           |  | 1.00 |
| 21 | 58031153000 | SPRING                         |  | 1.00 |
| 22 | 57031549000 | STARTING DEVICE                |  | 1.00 |
| 23 | 57231150100 | START.DEVICE BODY 4S           |  | 1.00 |
| 25 | 58031180000 | WARM START BUTTON              |  | 1.00 |
| 26 | 58031181000 | HEXAGON NUT M 9X0,75           |  | 1.00 |
| 27 | 0964040143  | OVAL HEAD SCREW DIN0964-M 4x14 |  | 3.00 |
| 28 | 0912040123  | AH SCREW DIN0912-M 4X12        |  | 2.00 |
| 30 | 57511027000 | RUBBER SLEEVE D=6MM OPEN       |  | 1.00 |
| 31 | 57031522000 | MAIN JET HOLDER                |  | 1.00 |
| 34 | 57031572000 | WASHER 3,3 X 5,8 X 0,5         |  | 1.00 |
| 35 | 57031515000 | SPRING AIR ADJUST.SCREW        |  | 1.00 |
| 36 | 57031517000 | MIXTURE REGULAT.SCREW M7X0,75  |  | 1.00 |
| 37 | 57031519000 | ADJUSTMENT SCREW M5            |  | 1.00 |
| 38 | 52031116000 | SPRING                         |  | 1.00 |
| 39 | 57031573000 | WASHER 5,1 X 8 X 0,8           |  | 1.00 |
| 40 | 57031519100 | KNURLED CAP PLASTIC            |  | 1.00 |
| 41 | 0933060163  | HH SCREW DIN0933-M 6X16        |  | 1.00 |

|    |             |                                |  |      |
|----|-------------|--------------------------------|--|------|
| 43 | 57031513000 | HOSE CONNECTOR                 |  | 1.00 |
| 44 | 15131112000 | FUEL FILTER                    |  | 1.00 |
| 45 | 50131174000 | COVER                          |  | 1.00 |
| 48 | 57031508000 | STUD 2 X 47                    |  | 1.00 |
| 50 | 57031511100 | FLOAT CHAMBER WITH RUN OVER T. |  | 1.00 |
| 52 | 57031514000 | PLUG M12X1                     |  | 1.00 |
| 53 | 58031199000 | GASKET SET PHM38SD/PHM40SD     |  | 1.00 |
| 58 | 58331029028 | SLIDE STOP L=28MM              |  | 0.00 |
| 60 | 58031160000 | TUBE FOR CARBURETOR '          |  | 1.00 |
| 95 | 31007007001 | PVC-HOSE 5 X 8 MM              |  | 0.00 |
| 97 | 52031137001 | PVC-HOSE 3X5MM                 |  | 0.00 |