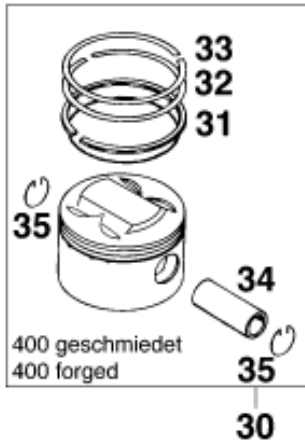
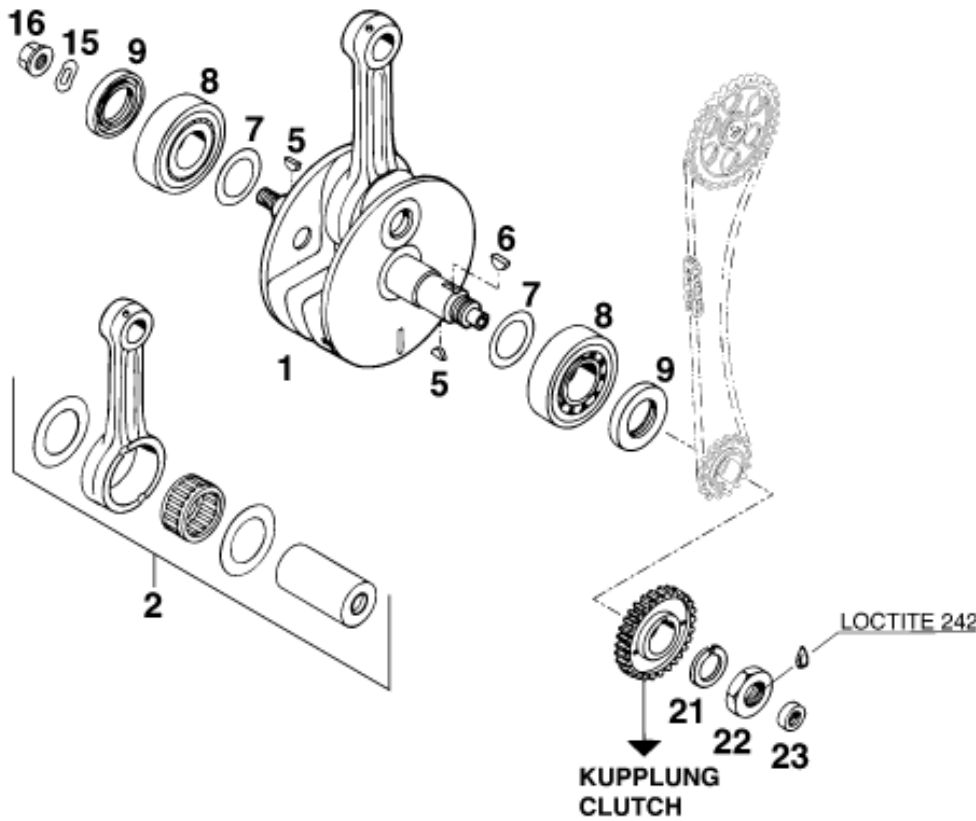


D=89mm



D=95mm



Pos	Part Number	Description	Additional Text	Quantity
1	57630018000	CRANKSHAFT CPL. 400 LC4 '97		1.00
1	58330018000	CRANKSHAFT CPL. 540/620 LC4'		1.00
2	58030015044	CONNECTING ROD REPAIR SET LC4	350/400/500/612 CCM L=140MM	1.00
2	58330015044	CONNECTING ROD REPAIR SET LC	620/640 CCM L=141,5MM	1.00
5	0888030050	WOODRUFF KEY DIN6888-3X5X13		2.00
6	6946005	WOODRUFF KEY 5X6,5 HARDED		1.00
7	56030081000	THRUST WASHER 30,5X45X0,10		0.00
7	56030081100	THRUST WASHER 30,7X47X0,15		0.00
7	56030081200	THRUST WASHER 30,5X45X0,30		0.00
8	58030082000	CYL.ROLLER BEARING NJ 306 C3		2.00
9	0760304771	SHAFT SEAL RING 30X47X7 BSL		2.00

15	0137120000	SPRING WASHER DIN0137-B12		1.00
16	51030028100	COLLAR NUT M12X1 LEFT WS=17		1.00
21	58030019000	LOCKING RING VSK 20		1.00
22	0936200155	HEXAGON NUT DIN0936-M20X1,5		1.00
23	0760122270	SHAFT SEAL RING 12 X 22 X 7 B		1.00
25	57630007100 II	PISTON II 95MM CPL. CAST '96		1.00
25	57630007100 I	PISTON I 95MM CPL. CAST '96		1.00
26	57630033100	PISTON BOLT 22 X 13 X 56,3		1.00
30	57530007000 II	PISTON II 89MM CPL. FORGED		1.00
30	57530007000 I	PISTON I 89 MM CPL. FORGED		1.00
31	57530031000	OIL SCRAPER RING 89MM		1.00
32	57530132000	TAPERED COMPR.PISTON RING 89MM		1.00
33	57530032000	RECTANGULAR RING 89MM		1.00
34	58030033000	PISTON PIN 22 X 13 X 54,2		1.00
35	58030074000	CIRCLIP A 22 X 1,5		2.00
41	58030631000	OIL SCRAPER RING 95MM	525 SX	1.00
42	58030732000	TAPERED COMPR.PISTON RING 95MM		1.00
43	58030632000	RECTANGULAR RING 95MM		1.00
45	58030074100	CIRCLIP C 22 X 1,5		2.00