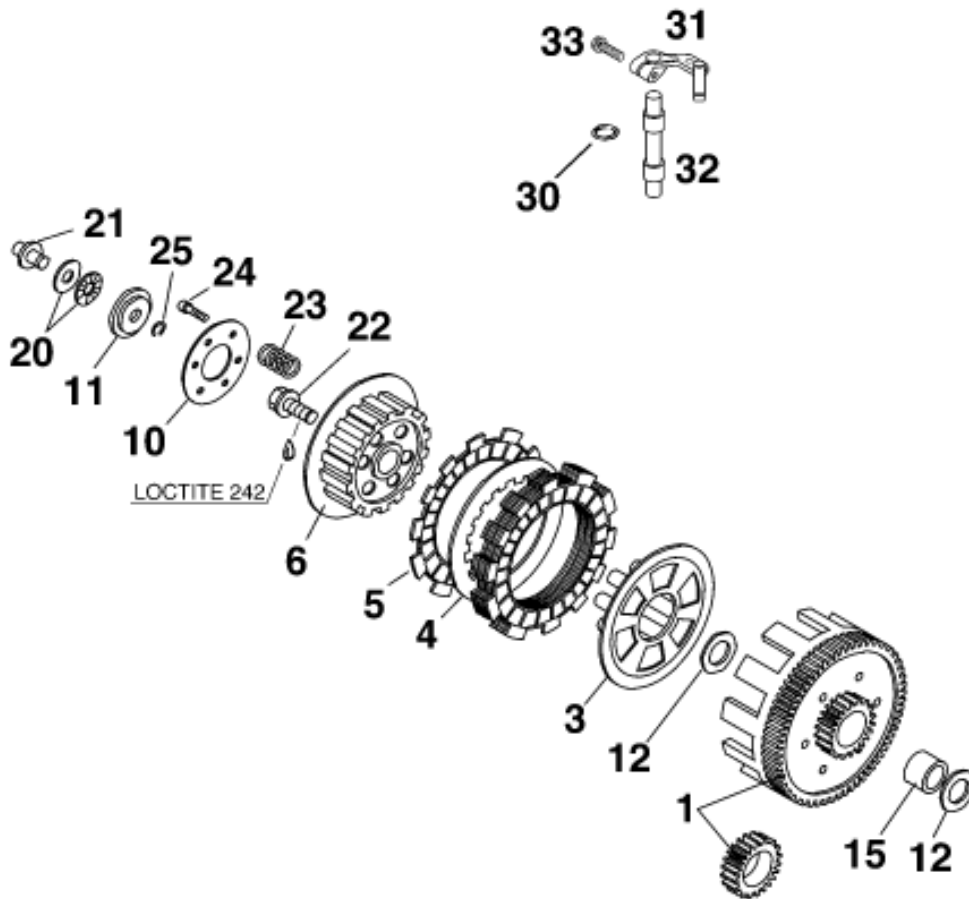


Motor Nr. / Engine No. B60 001755 ➔

Motor Nr. / Engine No. B65 002273 ➔



Pos	Part Number	Description	Additional Text	Quantity
1	46032000144	PRIM.DR.W.CLUTCH HUB 23:75 '99		1.00
3	46032003000	PRESSURE CAP 60/65 CCM '98		1.00
4	46032010000	INTERMEDIATE DISK STEEL		5.00
5	46032011000	LINING DISK		6.00
6	46032002000	INNER CLUTCH HUB 60/65 CCM '98		1.00
10	46032006000	SPRING RETAINER 25X63,5X2		1.00
11	46032008000	CARRIER FOR AXIAL BEARING		1.00
12	49032012000	STOP DISK 17,2X30X1,5		2.00
15	46032015000	INNER RING 22X17X20,5		1.00
20	46032056000	AXIAL BEARING 6X19X2		1.00
21	46032054000	PRESSURE PIECE		1.00
22	46032019000	HH COLLAR SCREW M10X20		1.00
23	46032005100	CLUTCH SPRING REINFORCED 60/65	L=27,5; D=2,1	6.00
24	0991060203	FLAT H.SCREW DIN7991-M6X20		6.00
25*	0471006007	CIRCLIP DIN0471-6X0,7		1.00
30	46032051000	O-RING 7,66X1,78		1.00
31	46032048000	* CLUTCH RELEASE LEVER CPL. 99		1.00
32	46032049100	*DISENGAGING SHAFT LOOSE '99		1.00

33	0015060203	HH COLLAR SCREW M 6X20 WS=8		1.00
----	------------	-----------------------------	--	------

\* = New part