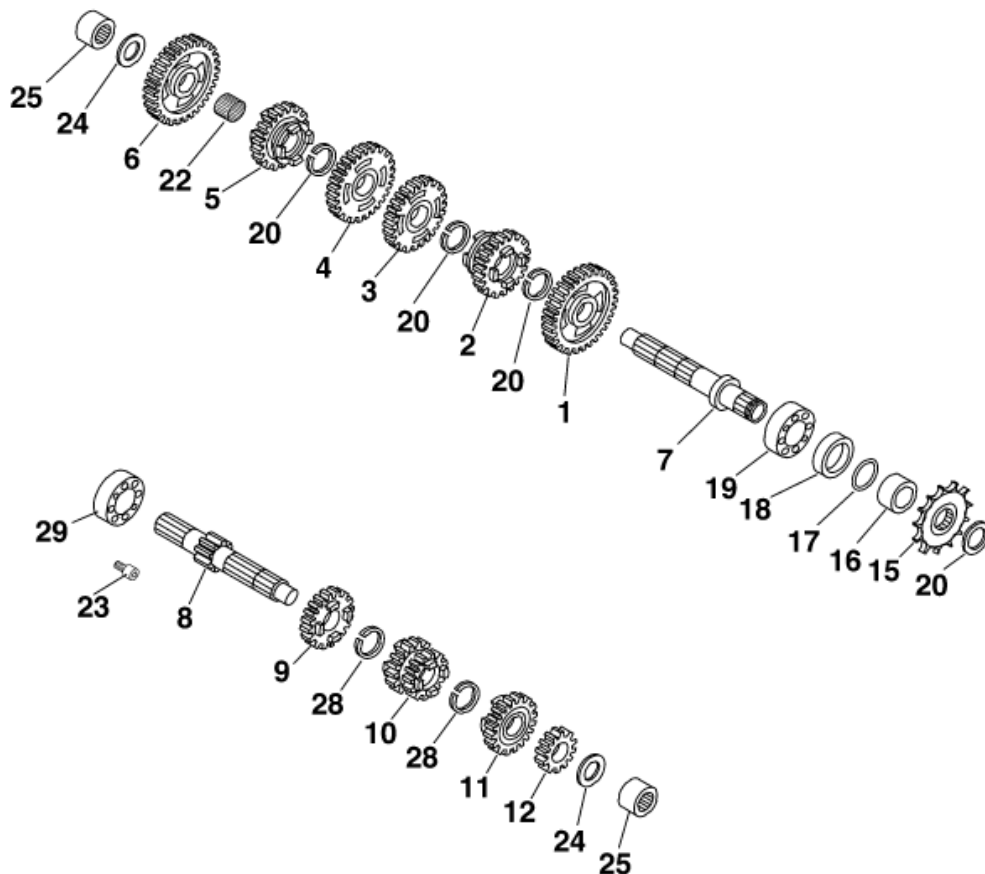


Motor Nr. / Engine No. B60 001755 ➔

Motor Nr. / Engine No. B65 002273 ➔



| Pos | Part Number | Description | Additional Text | Quantity |
|-----|-------------|-------------------------------|-----------------|----------|
| 1 | 46033011000 | IDLER GEAR 2ND GEAR 34-T | | 1.00 |
| 2 | 46033012000 | SLIDING GEAR 6TH GEAR 26-T | | 1.00 |
| 3 | 46033013000 | IDLER GEAR 3RD GEAR 31-T | | 1.00 |
| 4 | 46033014000 | IDLER GEAR 4TH GEAR 30-T | | 1.00 |
| 5 | 46033015000 | SLIDING GEAR 5TH GEAR 28-T | | 1.00 |
| 6 | 46033016100 | IDLER GEAR 1ST GEAR 37-Z '00 | | 1.00 |
| 7 | 46033002000 | COUNTER SHAFT | | 1.00 |
| 8 | 46033001000 | MAIN SHAFT 13-T | | 1.00 |
| 9 | 46033007000 | IDLER GEAR 5TH 23-T | | 1.00 |
| 10 | 46033008000 | SLIDING GEAR 3RD/4TH - 21/18 | | 1.00 |
| 11 | 46033009000 | IDLER GEAR 6TH GEAR 24-T | | 1.00 |
| 12 | 46033010000 | SOLID GEAR 2ND GEAR 16-T | | 1.00 |
| 15 | 46033029012 | SPROCKET 12-T 60/65 '98 | | 1.00 |
| 15 | 46033029013 | SPROCKET 13-T 60/65 | | 0.00 |
| 16 | 46033030000 | DISTANCE BUSHING SPROCKET | | 1.00 |
| 17 | 46033031000 | O-RING 18,77X1,78 | | 1.00 |
| 18* | 0760263560 | SHAFT SEAL RING 26X35X6 | | 1.00 |
| 19 | 46033028000 | Grooved ball bearing 20X42X12 | | 1.00 |
| 20 | 49033091000 | CIRCLIP AS20X1,75 | | 4.00 |
| 22 | 46033020000 | NEEDLE BEARING 14X18X8 | | 1.00 |

| | | | | |
|----|-------------|-------------------------------|--|------|
| 23 | 46033023000 | SPECIAL SCREW M6X10 | | 1.00 |
| 24 | 49033013000 | STOP DISK 12,1X25X1 | | 2.00 |
| 25 | 46033026000 | NEEDLE BEARING NK12 12X19X12 | | 2.00 |
| 28 | 46033022000 | CIRCLIP WS=17X1,2 | | 2.00 |
| 29 | 46033025000 | GROOVED BALL BEAR.SKF98203/C3 | | 1.00 |

* = New part