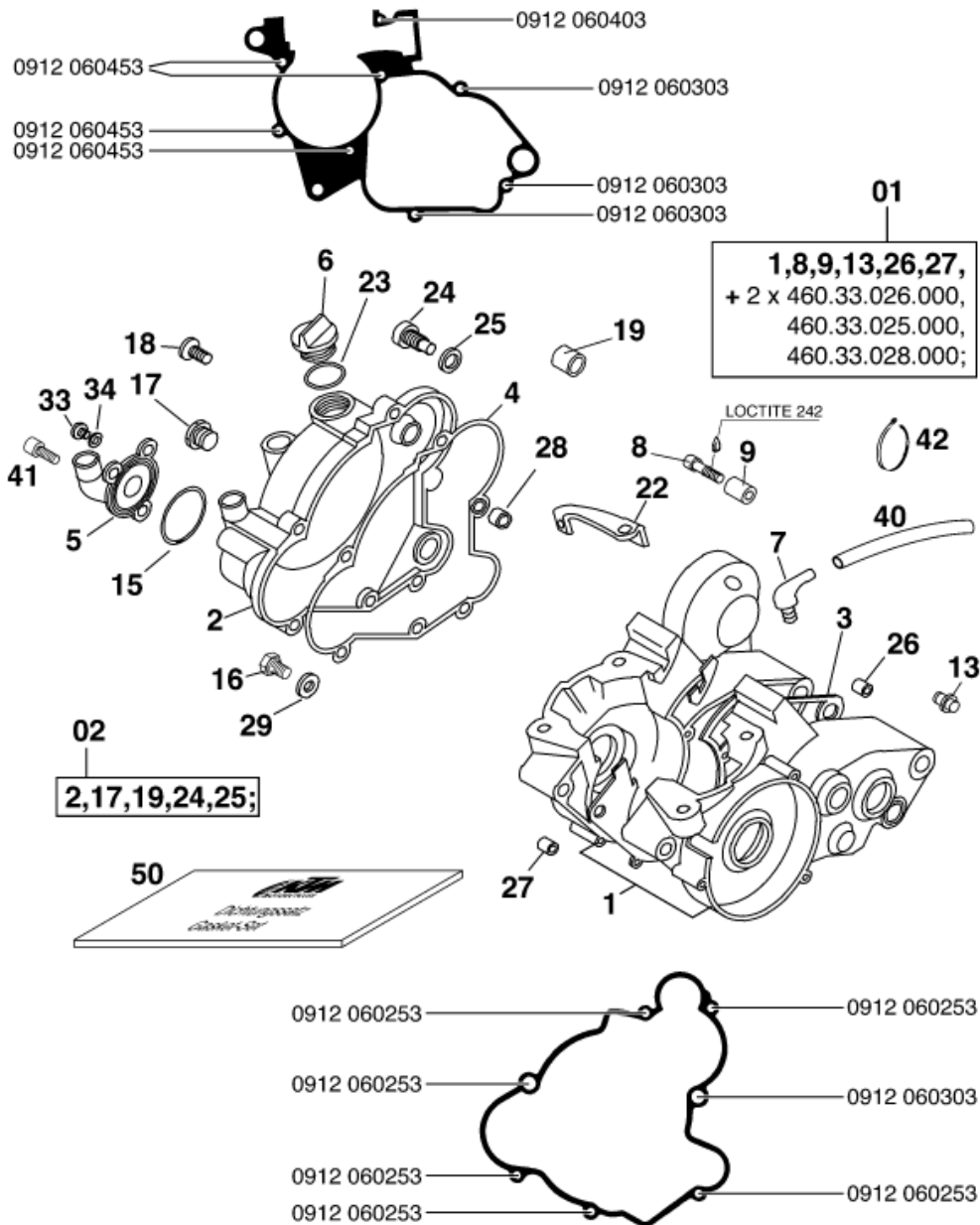


Motor Nr. / Engine No. B60 000001 – B60 000200  
Motor Nr. / Engine No. B65 000001 – B65 000210



Pos	Part Number	Description	Additional Text	Quantity
1	46030000044	ENGINE CASE CPL.W.TRAN.BEAR'98		1.00
2	46030001000	CLUTCH COVER CPL. 60/65 '98		1.00
3	46030039000	ENGINE CASE GASKET 60/65		1.00
4	46030025000	CLUTCH COVER GASKET INSIDE		1.00
5	46035052000	WATER PUMP COVER 60/65 '98		1.00
6	58030020000	PLUG M 24X3		1.00
7	51030022000	ANGLE PIECE 90 DEGREE M10X1		1.00
15	46035053000	O-RING		1.00
16	46030021000	OIL DRAIN PLUG M10 WS=14		1.00
17	46030095000	INSPECTION LENS TRANSM. OIL		1.00
18	0991060203	FLAT H.SCREW DIN7991-M6X20		1.00

22	46032059000	SUPPORT FOR CLUTCH CABLE		1.00
23	0770160030	O-RING 16,00X3,00 NBR 70		1.00
26	46030023100	DOWEL 17X15		1.00
27	46030023000	DOWEL 12X14,5		1.00
28	46030024000	DOWEL 9X15		1.00
29	42013226000	CU-SEAL RING DIN7603-10X16X1		1.00
33	46035061000	PLUG M6X7		1.00
34	0603061001	CU-SEAL RING DIN7603-6X10X1		1.00
40	31007007001	PVC-HOSE 5 X 8 MM		0.00
41	0912060163	AH SCREW DIN0912-M 6X16		3.00
42	44011076100	CABLE TIE 100/2,5MM BLACK		0.00
50	46030099000	GASKET SET CPL. 60/65 CCM		1.00