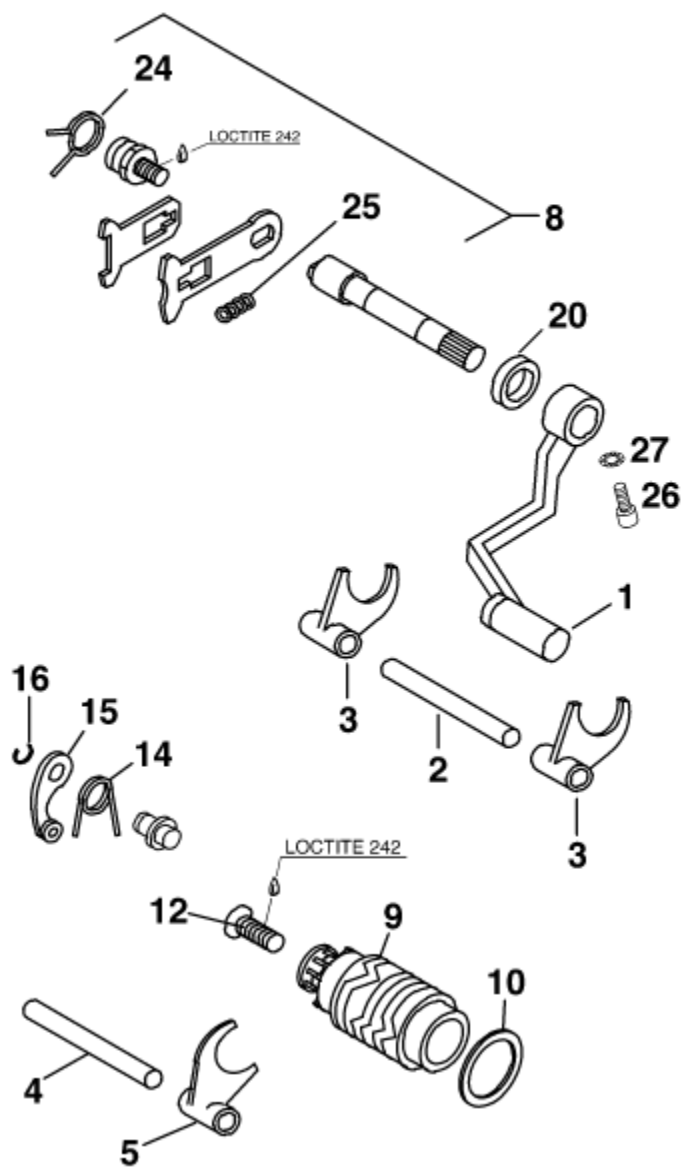


Motor Nr. / Engine No. B60 000201 – B60 001754

Motor Nr. / Engine No. B65 000211 – B65 002272



Pos	Part Number	Description	Additional Text	Quantity
1	46034031000	SHIFTING LEVER CPL. 60/65 CC		1.00
2	46034020000	SHIFT RAIL 10X83MM		1.00
3	46034002000	SHIFT FORK COUNTERSHAFT		2.00
4	46034019000	SHIFT RAIL 10X72MM		1.00
5	46034001000	SHIFT FORK MAIN SHAFT		1.00
8	46034005044	SHIFT SHAFT CPL.		1.00
9	46034012100	SHIFT ROLLER CPL.W.DRUM LOCA		1.00
10	46034091000	SPACER WASHER 30X38 (SET)		0.00
12	0991060303	FLAT HEAD SCREW DIN7991-M 6X30		1.00
14	46034023000	LOCKING LEVER SPRING		1.00
15	46034024000	LOCKING LEVER CPL.		1.00
16	0799100000	* TAB WASHER DIN6799-RS10,0		1.00
20	0760122050	SHAFT SEAL RING 12X20X5 B		1.00
24	46034014000	RETURN SPRING		1.00

25	46034009000	PRESSURE SPRING SLIDER PLATE		1.00
26	0912060203	AH SCREW DIN0912-M 6X20		1.00
27	0797060003	TOOTH LOCK WASH. DIN6797-A 6,4		1.00