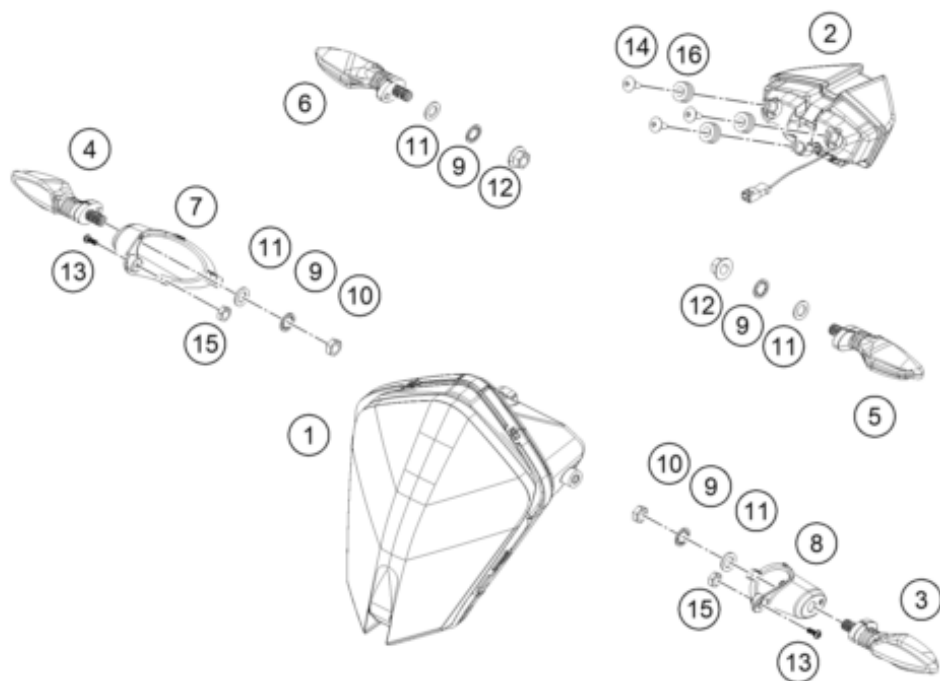


Skalierung: 25% 75%



| Pos | Part Number | Description | Additional Text | Quantity |
|-----|---------------|--------------------------------|-----------------|----------|
| 1 | 95814001000 | LAMP HEAD | | 1.00 |
| 2 | 63514040000 | Tail light | | 1.00 |
| 3 | 91214025000 | FLASHER L/S | | 1.00 |
| 4 | 91214026000 | FLASHER R/S | | 1.00 |
| 5 | 95814026000 | INDICATOR REAR LH | | 1.00 |
| 6 | 95814025000 | INDICATOR REAR RH | | 1.00 |
| 7 | 95814011090 | Turn signal bracket, right, EU | | 1.00 |
| 8 | 95814010090 | Turn signal bracket, left | | 1.00 |
| 9 | J06797100183 | Toothed washer, M10 | | 4.00 |
| 10 | J934100006 | Nut hex thin-M10x1.25 | | 2.00 |
| 11 | J125100009 | Washer M10 | | 4.00 |
| 12 | J926100003 | nut-hex-flanged | | 2.00 |
| 13 | J005050121 | Oval head screw M5X12 | | 2.00 |
| 14 | J900000401200 | screw tapping-dia. 4.5xl 12xbr | | 3.00 |
| 15 | J934050003 | nut hex thin-m5x0.8xht.3.2xbri | | 2.00 |
| 16 | 93014017000 | Rubber bushing | | 4.00 |