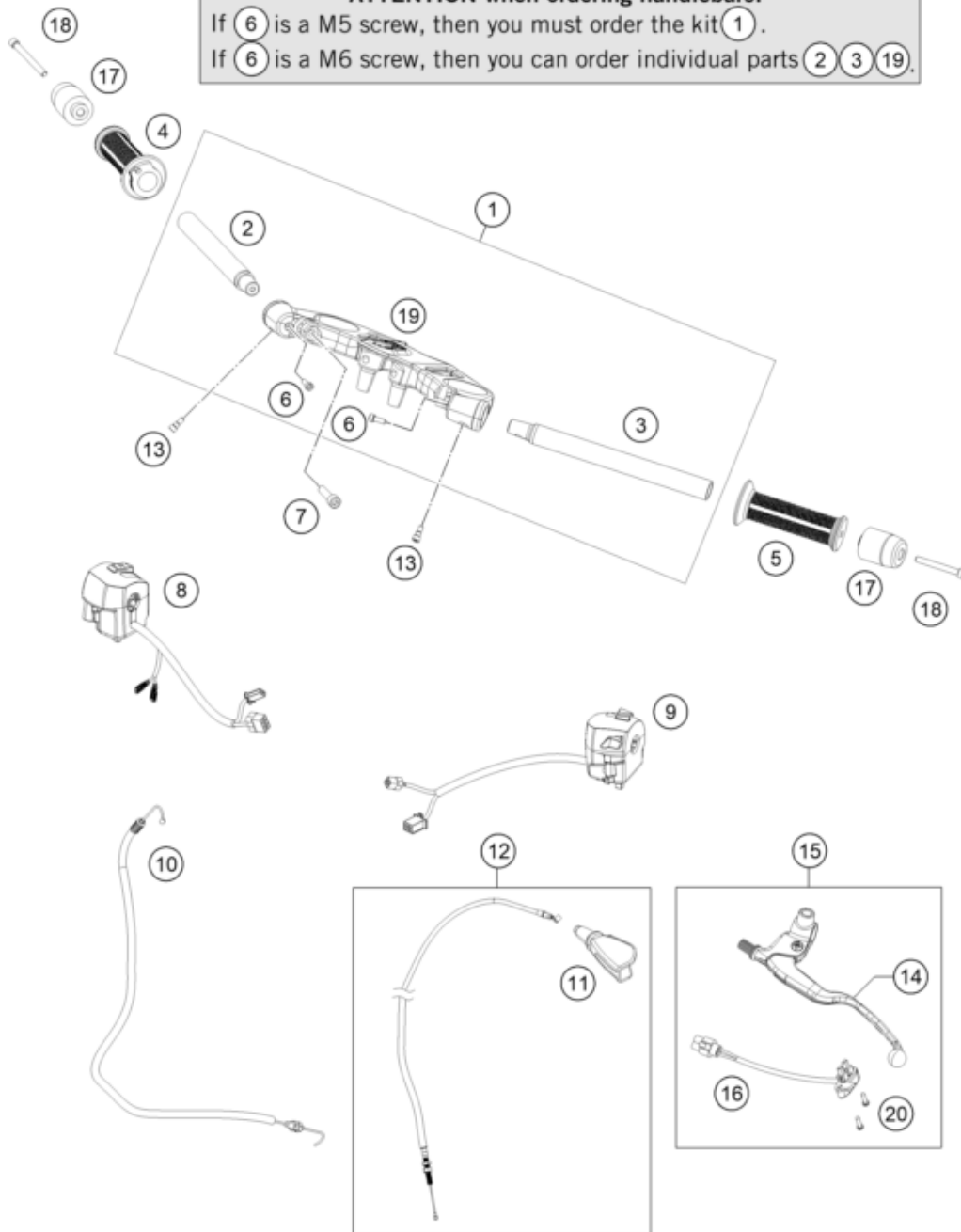


HINWEIS zu Lenkerstummeln!

Wenn ⑥ eine M5 Schraube ist, dann muss Kit ① bestellt werden.
Wenn ⑥ eine M6 Schraube ist, dann können Einzelteile ② ③ ⑱ bestellt werden.

ATTENTION when ordering handlebars!

If ⑥ is a M5 screw, then you must order the kit ①.
If ⑥ is a M6 screw, then you can order individual parts ② ③ ⑱.



Pos	Part Number	Description	Additional Text	Quantity
1	90801034044	UPPER TRIPLE CLAMP w HANDLEBAR		1.00
2	90802201100	HANDLEBAR RC390 RH		1.00
3	90802005000	HANDLEBAR L/S		1.00
4	90802010000	THROTTLE GRIP		1.00
5	90802039000	HAND GRIP L/S		1.00
6	90511006100	BOLT SOCKET M6X1X14		2.00
7	90501045000	AH SCREW M8X1.25X30		2.00
8	90511074000	START-EMERGENCY STOP SWITCH		1.00
9	90511070000	light switch		1.00
10	90502091100	THROTTLE CABLE		1.00

11	90102016000	PROTECTION CAP THROTTLE CABLE		1.00
12	90802090000	CLUTCH CABLE		1.00
13	90511006000	SPECIAL SCREW M5x0,8X13		2.00
14	90502042000	CLUTCH LEVER		1.00
15	90502031000	CLUTCH LEVER CPL.		1.00
16	90511049000	clutch switch		1.00
17	90202004001	HANDLEBAR WEIGHT		2.00
18	J912060503	AH SCREW M6X50		2.00
19	90501034135	Top triple clamp		1.00
20	90232014002	Screw pan cross M3x0.5		2.00