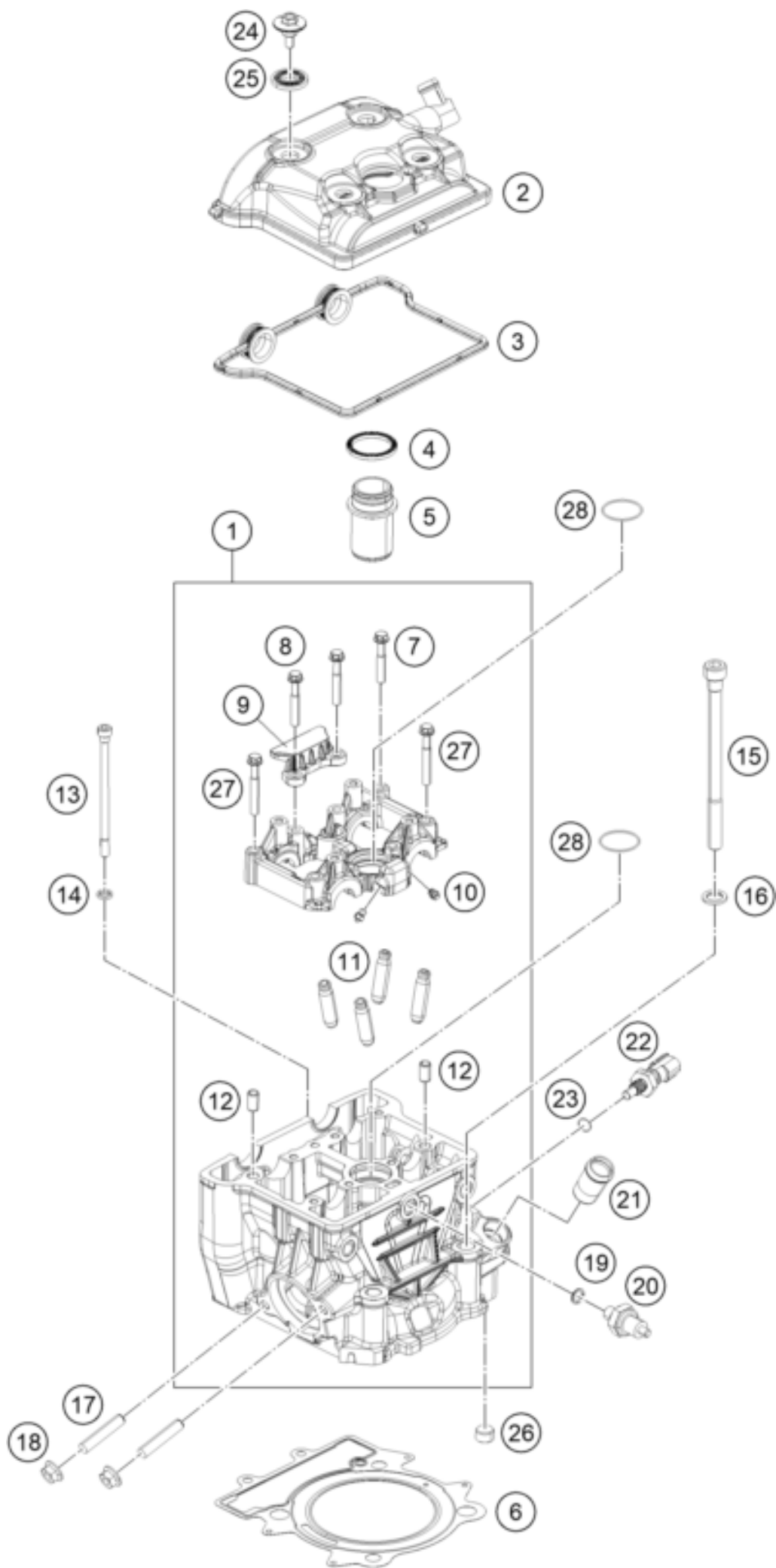




390 DUKE WHITE ABS B.D. 16 <2016><US><F4375P1>
CYLINDER HEAD
14077



| Pos | Part Number | Description | Additional Text | Quantity |
|-----|---------------|---------------------------|-----------------|----------|
| 1 | 90236020033 | CYLINDER HEAD CPL. | | 1.00 |
| 2 | 90236052000 | VALVE COVER CPL. | | 1.00 |
| 3 | 90236053000 | GASKET VALVE COVER | | 1.00 |
| 4 | 90236054000 | GASKET SPARK PLUG SHAFT | | 1.00 |
| 5 | 90236074000 | SPARK PLUG SHAFT | | 1.00 |
| 6 | 90230036000 | CYLINDER HEAD GASKET | | 1.00 |
| 7 | J025060356 | HH-COLLAR SCREW M6X35 WS8 | | 4.00 |
| 8 | J025060401 | HH COLLAR SCREW M6X40 | | 2.00 |
| 9 | 90236018000 | CHAIN GUIDE TOP | | 1.00 |
| 10 | 90130064000 | OIL JET | | 4.00 |
| 11 | 90236025000 | VALVE GUIDE | | 4.00 |
| 12 | 90130024000 | PIN DOWEL 8X6,4X14MM | 14mm length | 2.00 |
| 13 | J912061023 | SOCKET HEAD SCREW M6X102 | | 2.00 |
| 14 | J125070003 | WASHER 7X11X2 | | 2.00 |
| 15 | J912101449 | SOCKET HEAD SCREW M10X144 | | 4.00 |
| 16 | J125110003 | WASHER 11,2X18X2 | | 4.00 |
| 17 | 90136020001 | STUD M8 | | 2.00 |
| 18 | 90136038000 | FLANGED NUT M8 H7,5 WS12 | | 2.00 |
| 19 | 90138091001 | O-RING | | 1.00 |
| 20 | 90138091000 | OIL PRESSURE SENSOR | | 1.00 |
| 21 | 90235019000 | PIPE COOLANT | | 1.00 |
| 22 | 90135047000 | TEMPERATURE SENSOR | | 1.00 |
| 23 | J770000817800 | O-ring 7.65x1.78 | | 1.00 |
| 24 | 90136052020 | VALVE COVER SCREW | | 4.00 |
| 25 | 90136052010 | DECOUPLING ELEMENT | | 4.00 |
| 26 | 90236024000 | PLUG | | 1.00 |
| 27 | J025060453 | HH COLLAR SCREW M6X45 | | 2.00 |
| 28 | J770029819 | O-RING 29,8X1,9 | | 2.00 |