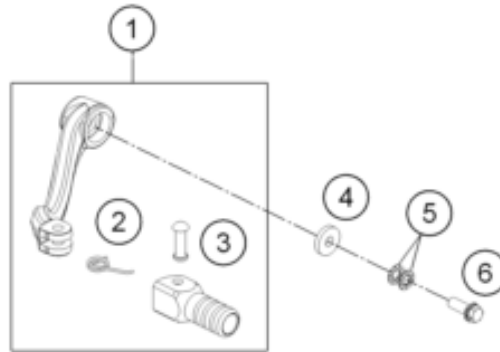
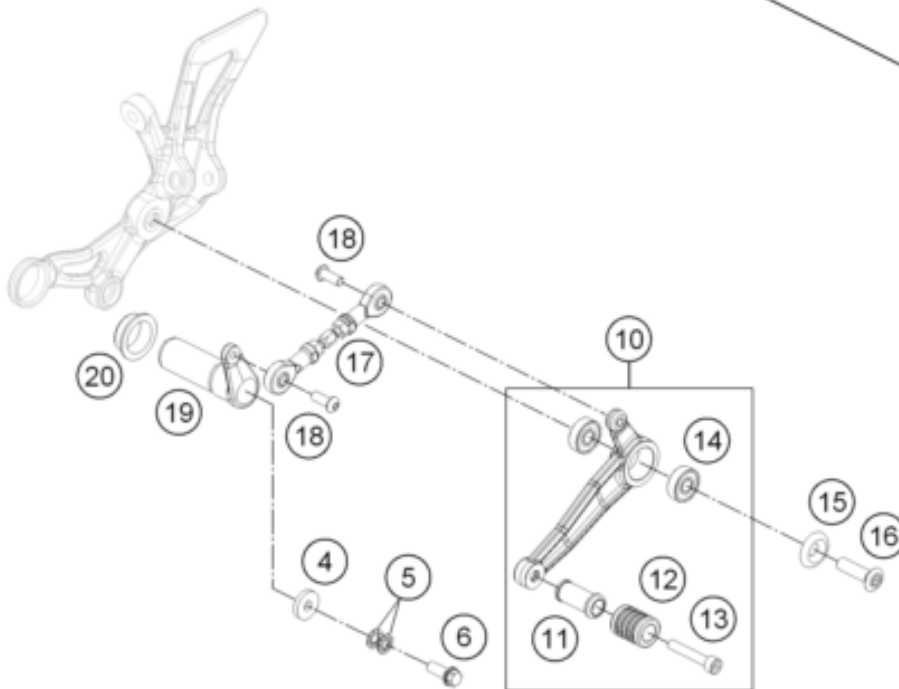


SCHALTHEBEL DUKE
SHIFT LEVER DUKE



SCHALTHEBEL DUKE R
SHIFT LEVER DUKE R



| Pos | Part Number | Description | Additional Text | Quantity |
|-----|----------------|-------------------------------|-----------------|----------|
| 1 | 75034031000 | SHIFT LEVER CPL. 07 | | 1.00 |
| 2 | 75034032000 | SHIFTING LEVER SPRING | | 1.00 |
| 3 | 54634031050 | BOLT 6X25 FOR SHIFT LEVER | | 1.00 |
| 4 | 50232050001 | STEEL WASHER 6,4X17X3 | | 1.00 |
| 5 | 50233041000 | Pair of washers M6 NORDLOCK | | 1.00 |
| 6 | 59009062016 | SPECIAL SCREW M6X16 WS=8 10.9 | | 1.00 |
| 10 | 7603403104433S | SHIFTING LEVER CPL. | | 1.00 |
| 11 | 69034032100 | GEAR LEVER | | 1.00 |
| 12 | 61034035000 | RUBBER FOR SHIFT LEVER 05 | | 1.00 |

| | | | | |
|----|---------------|--------------------------------|--|------|
| 13 | 0912060353 | AH SCREW DIN0912-M 6X35 | | 1.00 |
| 14 | 0625006087 | Grooved ball bearing 608 2RS C | | 2.00 |
| 15 | 58303061100 | SPECIAL WASHER ALU 8X24 MM ELO | | 1.00 |
| 16 | 0019080306S | COUNTER-SUNK SCREW ISA45 M8X30 | | 1.00 |
| 17 | 76034036000 | SHIFT LEVER | | 1.00 |
| 18 | 0738060161 | FLAT HEAD SCREW ISO7380 M6X16 | | 2.00 |
| 19 | 7600317000033 | LEVER ARM | | 1.00 |
| 20 | 76034038000 | SLIDE BEAR. IGUS JFM-222532-08 | | 1.00 |