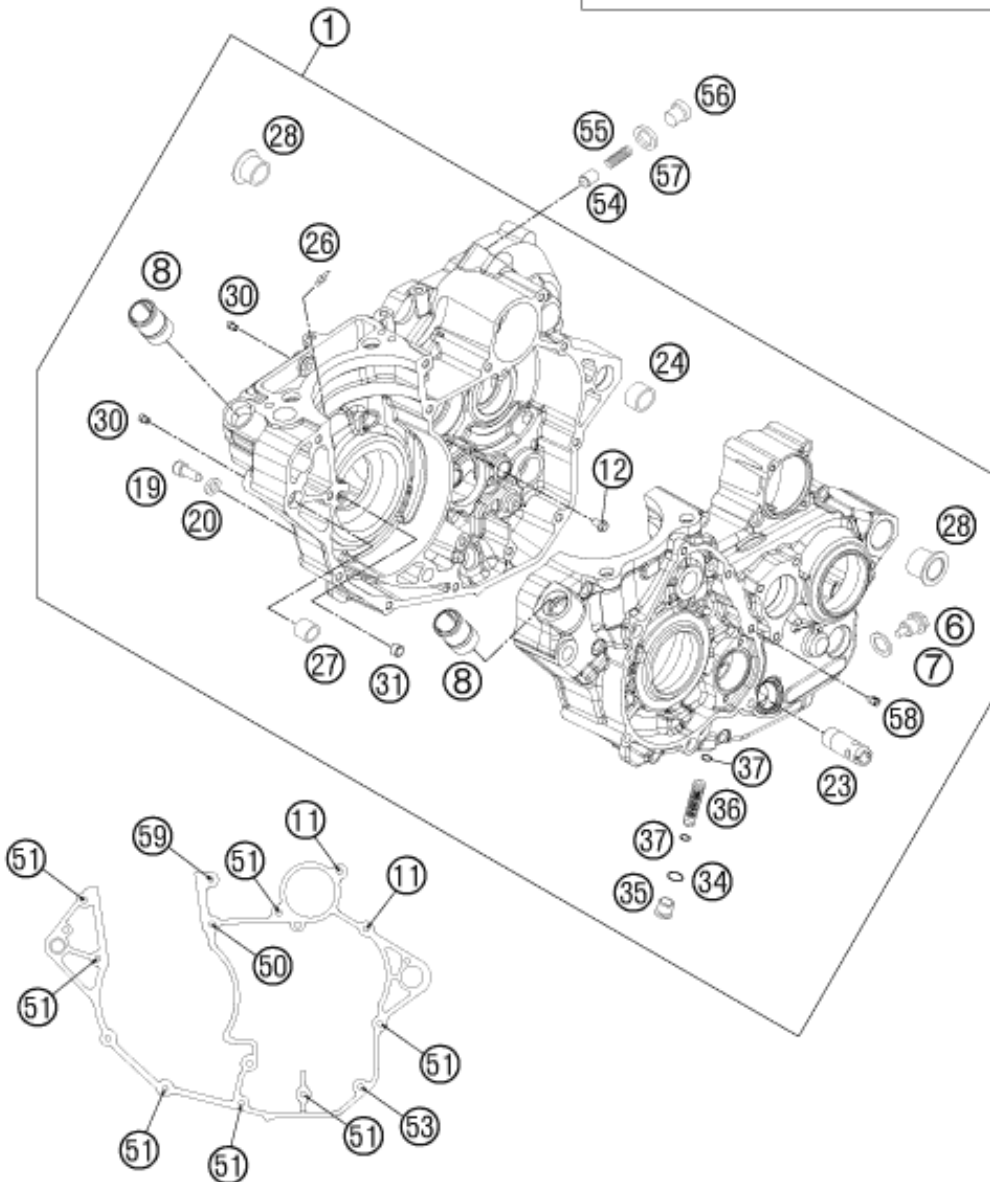




- ①
- ⑥ ⑦ ⑧ ⑫ ⑰ ⑳ ㉓ ㉔ ㉖  
㉗ ㉘ ㉙ ㉚ ㉛ ㉜ ㉝ ㉞ ㉟
- 7x 590.30.196.000,  
1x 0760 142460, 0760 324571,  
0760 354774, 0760 304772,  
770.38.013.100,
- + LAGER / BEARINGS**  
2x 503.30.082.000,  
2x 546.32.095.000,  
1x 0625 060042, 0625 060031,  
0625 160031, 0625 062054,  
0625 618050, 0618 182412.



Pos	Part Number	Description	Additional Text	Quantity
1*	77130000244	ENGINE CASE		1.00
6	58030021000	OILDRAIN PLUG W.MAG. M 12X1,5		1.00
7	58038022000	CU-seal ring DIN7603-12X18X1,5		1.00
8	58030010200	SCREW IN NOZZLE M20X1,5		2.00
11	0025060406	HH collar screw M6x40 TX30		2.00
12	0025060086	HH collar screw M6x8 TX30		2.00
19	58030080000	LOCATING SCREW M8 L=23	450/525 MXC, EXC	1.00

20	58030081000	CU-SEAL RING 8 X 14 X 3		1.00
23	77038022000	OIL INTAKEPIPE		1.00
24	59030024000	DOWEL 17 X 19 X 12		1.00
26	60030064070	OIL JET 70 M6X0,75 WS8 03		1.00
27	54630027000	DOWEL BUSHING 13,8X11X12		1.00
28	75030010100	CASE BUSH		2.00
30	59030058000	JET 100 BING(44-031/180) M4		2.00
31	77130023000	DOWEL 6X8X5,5		1.00
34	0770120020	O-RING 12,00X2,00 NBR 70		1.00
35	77038017000	SCREW PLUG		1.00
36	59038015100	OIL SCREEN 11,8x44,5MM		1.00
37	07700900151	O-RING 9x1,5 V80 SH		2.00
50	0025060656	HH COLLAR SCREW M6X65 TX30		1.00
51	0025060506	HH collar screw M6x50 TX30		7.00
53	0025060306	HH collar screw M6x30 TX30		1.00
54	58038028000	VALVE PISTON D=10MM		1.00
55	58038023300	PRESSURE SPRING L=25MM D=1MM		1.00
56	0908120153	threaded plug DIN 908 M12x1.5	DUKE	1.00
57	58038022000	CU-seal ring DIN7603-12X18X1.5		1.00
58	80030058060	OIL JET "60" M4		1.00
59	0025060606	HH collar screw M6x60 TX30		1.00
60	77030099100	GASKET SET 05-11		1.00

\* = New part