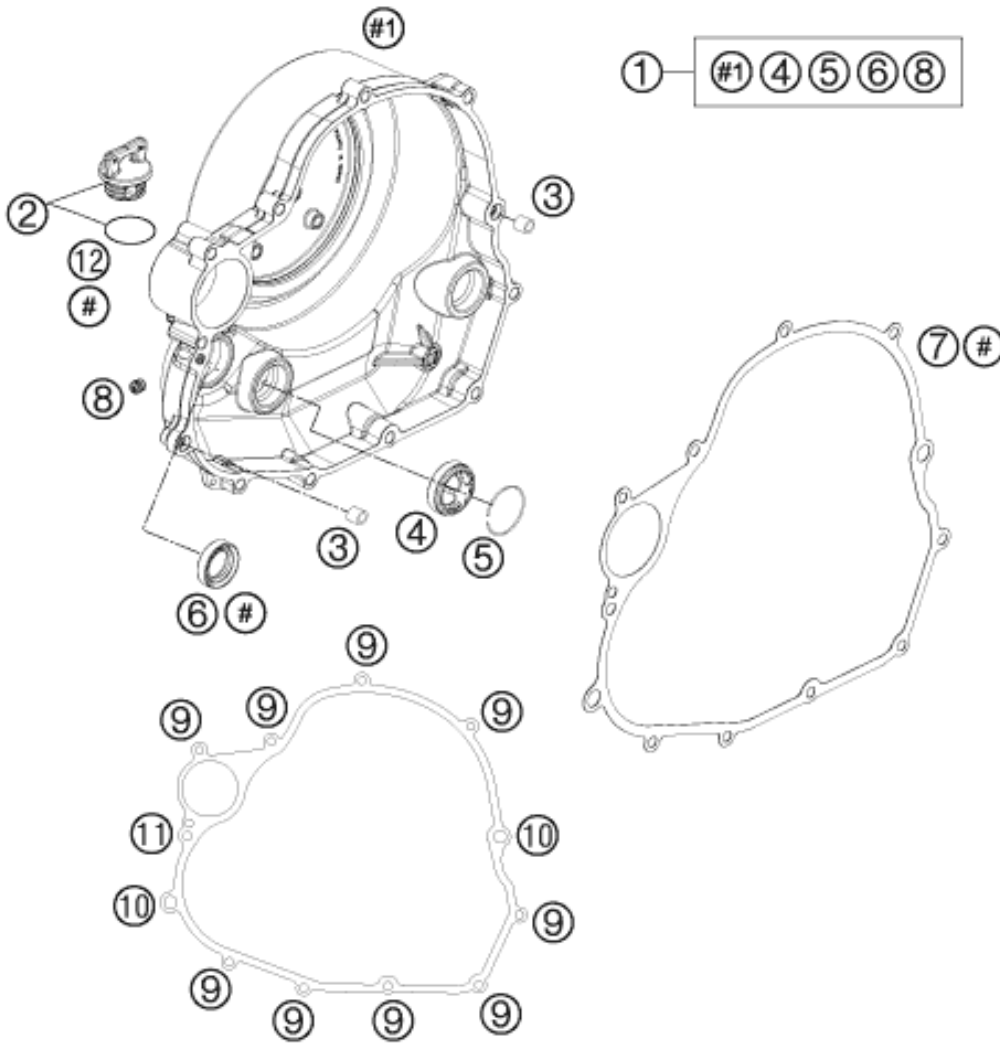


# ENTHALTEN IM DICHTSATZ MOTOR LC4  
INCLUDED IN GASKET-SET ENGINE LC4



Pos	Part Number	Description	Additional Text	Quantity
1	75030001044	CLUTCH COVER CPL. 07		1.00
2	58030020100	oil plug cpl. M24x3		1.00
3	49030090000	DOWEL 9,8 X 7 X 10	FS-E	2.00
4	59030019100	OIL LEVEL GLASS		1.00
5	61030019050	CIRCLIP OIL LEVEL GLASS 03		1.00
6	0760172871	SHAFT SEAL RING 17X28X7B VITON		1.00
7	75030025000	CLUTCH CASE GASKET 07		1.00
8	59030296000	SCREW PLUG		1.00
9	0025060256	HH collar screw M6x25 TX30		9.00
10	0025060306	HH collar screw M6x30 TX30		2.00
11	0025060356	HH collar screw M6x35 TX30		1.00
12	0770191015	O-RING 19,00X3,00 NBR		1.00